

Council often receives requests from citizens asking for speed limit reductions on Canton de Hatley roads. In fact, we do have the responsibility and power, by by-law, to set speed limits for each of our roads. Obviously speed limits must change and be adapted to the driving environment. Population density, road width, visibility and the road conditions are all factors that influence the limit. The Quebec Transport Ministry also sets speed limits for their roads. To do so, it has produced a technical guide to set the maximum speed limits while ensuring safety.

Despite technical considerations and signs, at what speed are we driving? Many studies show that signs have very little influence on driving speed. In fact, the actual factors that determine speed are more personal than technical. For example, the repeated use of the same road increases driver confidence. He or she gets to know all the subtleties of the road, each curve, each straight line and even spots where deer cross. So it's of no surprise that a majority of speeding tickets are given out to local residents. So perhaps we should be talking about our level of speed comfort. We need to drive at a speed that we feel is safe.

This year has seen a 350% increase in traffic tickets written on our territory. Is it normal to see such

an increase? Obviously, it's in the area of the future highway 410 where we observe main reason for this increase.

As with each municipality, there are areas that are especially convenient for giving out tickets, commonly known as radar traps. The question in such a case is... Is the speed limit too low? If a majority of users have a comfort zone that is above the stated speed limit, then the answer may be yes. That is often what happens when we focus only on speed to increase an area's safety.



Even though municipalities have an important part to play in road safety, much responsibility lies with drivers themselves. Adapting to road conditions and respecting speed limits largely increase safety, but an accident remains an accident.

Martin Primeau, mayor

Source : Guide de détermination des limites de vitesses. (available on the MTQ web site)

STAY UP TO DATE WITH THE LATEST NEWS

Do you wish to stay up to date with the latest municipal news?



Register for the newsletter on the home page of the Canton de Hatley web site.

With each news item you receive an e-mail notice.

WELCOME TO CANTON DE HATLEY!

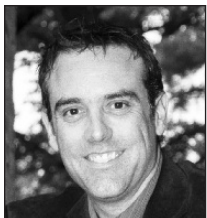
The municipality wishes to improve its welcome of new residents. If you wish to participate by offering a product from your business, contact the municipality at 819-842-2977 or by e-mail at info@cantondehatley.ca.



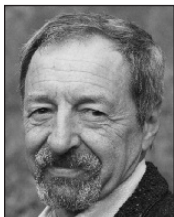
TABLE OF CONTENTS

Environment	2
Financial Report	3
Follow-up on Council Meetings	3-4
Community	4
Public Safety	4
Local Business	5
Recreation	5
Your Children	6
Halloween Visit	6

Your Municipal Council



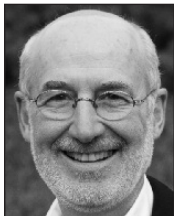
Martin Primeau
Mayor



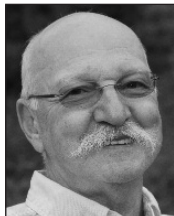
Patrick Clowery
Councillor n°1



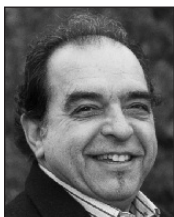
Vincent Fontaine
Councillor n°2



Jacques Bogenez
Councillor n°3



Claude B. Meilleur
Councillor n°4



Guy Larkin
Councillor n°5



Sylvie Cassar
Councillor n°6

General Manager:

Liane Breton

Assistant to the Director:

Paul Conway

Assistant Treasurer:

Annie Deshaies

Building and Environment Inspector:

Éric Gravel

Public Works Director:

Jean-François Laflamme

Recreation Development Agent:

Hélène Cyr

Office hours:

Monday to Friday
8 a.m. to 12 and 1 to 4 p.m.

To reach us:

135 rue Main, North Hatley (Québec) J0B 2C0
Tel. : 819 842-2977 • Fax: 819 842-1997
E-mail: info@cantondehatley.ca
Web site: www.cantondehatley.ca

Graphic Design & printing of Newsletter:

Les Publications Municipales – 1 877 553-1955

TEMPORARY CAR SHELTERS

Between October 15 and April 15, a maximum of two temporary garages for a maximum of two (2) cars are allowed per property. Outside of that period, car shelters are not allowed.

LARGE HOUSEHOLD ITEMS COLLECTION

The next large household item pick up will be on October 30, 2014.

WATCH WHERE YOU PUT YOUR BIN... ESPECIALLY IN WINTER

On garbage collection days, it is important to place your bins on your property (on your driveway or access) and not in the road where they will impede snow removal.

If your bins are not on your property and get damaged, the damage will be your responsibility and not that of the company doing the snow removal.



BROWN BIN: PROBLEM AND SOLUTIONS IN WINTER

Everything gets stuck in the frozen bin!

- In winter, materials can stick to the inside of the brown bin making it impossible for the truck to empty it.
- Take advantage of milder weather to remove the materials that are stuck.
- Before freezing weather sets in and when the bin is completely empty, place a flat piece of cardboard (ex: cereal box) on the bottom. Repeat each time the bin is emptied.
- Put your residues in paper bags, compostable bags or newspaper.
- Avoid putting liquids in your brown bin.

DON'T THROW OUT YOUR UNWANTED ITEMS. CONSIDER THE RESSOURCERIE DES FRONTIÈRES!

Free at-home pick up of your unwanted items.

1-855-804-1018

info@ressourceriedesfrontieres.com



MASSAWIPPI RIVER CLEAN-UP

Last August 30th, about fifty cadets from Valcourt and Sherbrooke paddled the Massawippi River cleaning the riversides and riverbed.

Once again, in cooperation with the Canton de Hatley Council, this Environment Committee initiative performed a significant clean-up of the river. The youngsters travelled up and down in canoes picking up garbage, returning the river to its natural state.

More than 2/3 of an industrial container was gathered.

Congratulations and THANK YOU!



How to submit your articles in the newsletter:

«Le Babillard» is published every 2 months and is distributed around the middle of the month. The community is encouraged to submit information pertaining to events, local organizations or community news before the 30th of the month preceding the publication. Just send your Word files and photos into separate files (JPG or BMP) by email to: info@cantondehatley.ca

FOR MORE INFORMATION: 819 842-2977

MAYOR'S REPORT ON THE FINANCIAL STATUS

In accordance with article 955 of the Municipal Code, you will find my report of the municipal administration's revenues and expenses for the financial year ending December 31st 2013.

YEAR 2013

The financial statement, prepared by RAYMOND CHABOT GRANT THORNTON shows, for the year 2013, a surplus of \$168,065.

YEAR 2014

For the year 2014, Council adopted a budget of \$4,014,160 and adopted a mill rate of \$0.39 per \$100 of evaluation, a rate of \$0.045 per \$100 and \$156 per household for the Sûreté du Québec services, a rate of \$0.063 per \$100 for fire protection, a rate of \$0.01 per \$100 for investment in roads and \$0.005 per \$100 for the environment tax. The year should end with a surplus.

Here is the list of contracts totaling more than 25 000 \$ (law 175).

Beauregard fosses septique	
Septic tank cleaning	\$153,491
Calclo	
Calcium for roads	\$31,082
Construction DJL	
Smith road pavement	\$172,140
Construction DJL	
Hatley Centre road pavement	\$143,639

Gauvin équipement	
Excavator rental	\$37,942
Groupe Ultima	
Insurance	\$26,868
Les constr. Réal St-Laurent	
Snow removal, northern sector (2014-15)	\$97,260
Ministre des Finances	
Provincial police	\$307,762
Parc régional Massawippi	
Municipality's share	\$32,120
R.I.P.I.	
Fire protection	\$129,627
RIGDSRC	
Garbage dump and composting	\$65,467 *
Sani-Estrie	
Garbage/reccyclables/compost	\$155,224
Stoddard Bruce Entreprises	
Snow removal, southern sector	\$213,447
Transport Jean-Luc Clément	
Snow removal, northern sector (2013-14)	\$99,355
Ville de Sherbrooke	
Fire protection	\$44,481

* estimate

YEAR 2015

For 2015, the renovation of the new building on Capelton road, formerly Montjoye, will be an important initiative,

both from a financial and human perspective. It will be financed by the municipality which has been planning this investment for many years. We are also expecting financial support from the provincial government.

Roads remain an issue with citizens and we will continue to prioritize the roads budget. One way of doing so is by investing in equipment that can improve the quality of service without compromising the budgetary balance. The provincial gas tax program has been renewed so we will continue to improve our road infrastructure.

We will continue with the connection of Hatley Acres residents to the new water filtration plant, owned jointly by the Canton de Hatley and North Hatley. At the beginning of 2015, there will be a start-up period for the new treatment plant to assess its requirements.

We will continue to work toward reaching regional fire protection objectives. This will be done in close cooperation with the R.I.P.I. fire department.

Pro-active management and cost planning are an important part of maintaining a stable taxation level. It is also important to maintain sufficient capabilities as an active community life is essential to maintaining a municipality's vitality.

Martin Primeau, mayor



FOLLOW-UP ON COUNCIL MEETINGS

ECHOES FROM COUNCIL'S SEPTEMBER 8TH MEETING

1) By-law 2014-15 is adopted

The purpose of this by-law is to replace the Construction code with a more recent version that takes into account the most recent government decrees.

2) By-law 2014-17 is adopted

By-law 2014-17 includes new standards for commercial signs in zone R-3 (Bel-Horizon road).

3) Permit request for 64 rue des Méandres

Following a positive recommendation from the land planning committee, Council accepted the permit request for the building of a residence at 64 rue des Méandres.

4) Permit request for 1320, Chemin Capelton

Following a positive recommendation from the land planning committee, Council accepted the permit request for the building of a residence at 1320, Chemin Capelton.

5) Minor exemption 2014-005

Council accepted the construction of a two (2)-story house with a maximum height of 10 meters instead of a one story house, as it will cause no inconvenience to neighbouring properties.

6) Hiring of Mrs. Lucie-Guyline Levasseur

Council has authorized the hiring of Mrs. Lucie-Guyline Levasseur as recreation coordinator during Mrs. Hélène Cyr's maternity leave.

7) Request for the Fire department

The municipality asked the Régie intermunicipale de protection incendie (RIPI) to search for a new location, in the territory it covers, for its fire station. This should be done while respecting the regional fire protection objectives.

8) Hatley Centre road pavement

The municipality awarded a contract of \$143,639 to pave Hatley centre road to Construction DJL inc.

9) Plateau Massawippi committee is set up

The municipality named the members of the new Plateau Massawippi committee i.e.: Mrs. Sylvie Cassar and Messrs.

(Continued on next page)

FOLLOW-UP ON COUNCIL MEETINGS

Martin Primeau, Patrick Clowery, Vincent Fontaine and Jacques Bogenez.

10) Request from Toulouse Excavation concerning Highway 410

Council accepted the request from Toulouse Excavation to close Bel-Horizon road during the night (from 7 p.m. to 6 a.m.) for a maximum of five (5) consecutive nights from September 15 to October 3, for construction of Highway 410.

11) Agreement authorization with Mr. Bradley Mitchell

Council authorized the Mayor and the Managing director to sign an agreement with Bradley Mitchell of 11 Chemin Université to exchange pieces of land for the drainage of the said road.

ECHOES FROM COUNCIL'S OCTOBER 6TH MEETING

1) Permit request for 68, Montée McKinven

Council authorized the construction of an accessory building on the property located at 68 Montée McKinven.

2) CPTAQ authorization request

Council did not support the request for the alienation of lot 4090330 in favor of the property of lots 4 029 563, 4 029 422, 4 548 925 and 4 029 556.

3) Signature mandate for Horsefall turn-around

Council authorized the mayor and managing director to sign an agreement for the construction of a turn-around on Horsefall road.

4) Signature mandate for aqueduct right-of-way

Council authorized the mayor and managing director to sign an agreement for the legal contract to set up the right-of-way for the passage, installation, maintenance, operation, repair and replacement of the aqueduct in favor of the municipality of Canton de Hatley.

5) Contract renewal with Serge Côté town planner, for 2015

Council authorized the renewal of the contract of \$15,000 with the firm SCU for land management planning for 2015.

6) Club Quad Arc-en-Ciel de l'Estrie inc. right-of-way renewal

Council accepted the request from Club Quad Arc-en-Ciel de l'Estrie inc. for the maintenance of right-of-ways in the municipality for winter use only.

7) Mayor's report

The Mayor tabled his report regarding the financial status of the municipality

COMMUNITY

SERVICES FOR SENIORS

Canton de Hatley and North Hatley

Services offered

- Meals on wheels (Monday & Wednesday)
- Blood pressure clinic
- Foot clinic
- Friendly visits
- Community meals
- Social events
- Shopping trips
- Support to care givers

For more information, contact Community Aid at 819-821-4779.

We are here to serve you...



LIST OF BUSINESSES

At the beginning of 2015, the municipality will publish a list of local businesses.

If you are not yet on the list, simply provide your information by e-mail at info@cantondehatley.ca or by phone at 819-842-2977.

PUBLIC SAFETY

CARBON MONOXIDE DETECTOR



Did you know that by-law 2014-12 concerning fire safety requires the installation of carbon monoxide detectors in any room equipped with any type of combustion equipment.

Carbon monoxide (CO) is a colorless, odorless, and tasteless gas that is toxic to humans. It is the cause of frequent household poisonings that can be fatal, but said emanations can be easily detected by a carbon monoxide detector. It comes from the incomplete combustion of materials and is accentuated by poor ventilation. The mixing with air is easy as its density is similar.

Source: Wikipedia.

FIRE PREVENTION VISITS

This year, more than 150 residences will receive a fire prevention inspection. To prevent fire hazards on our territory, the municipality has mandated **Groupe GPI** to perform prevention visits and inspections. Each inspector will be carrying a certified letter authorizing



Groupe GPI to do these visits. Every piece of information or photo taken during these visits is confidential and will be reserved strictly for use by the fire department.

The technicians will emphasize particular attention to the following elements:

- smoke detectors (a minimum of one (1) per floor)
- carbon monoxide detectors when combustion apparatus is used
- The conformity of the heating installations, including chimneys.



CURLING IS FOR EVERYONE!

Long considered as a “granddad” sport, curling is becoming more and more popular for people of all ages. Apparently, it was the most watched sporting event at the last Winter Olympics.

While curling can be a competitive sport, for most, it's practiced for recreation. The beauty is that it is accessible to almost anyone, no matter what one's capabilities. Even people with back or knee problems can practice curling.

It must be said that curling has a strong social element. You get to meet people of all ages and from all walks of life.

THE NORTH HATLEY CURLING CLUB

The North Hatley curling club was founded in 1957. Before that, curling was played at or beside Bray Manor which later became the site of the Hatley Inn. The club is non-profit and entirely managed by volunteers. There are now about 100 members, but there is room for 180.



REASONS TO TRY CURLING

1. A great occasion to meet new people
2. A sport that can be practiced from very young to well beyond retirement
3. A sport that is easy to learn
4. A sport that can be practised by men and women together
5. An affordable sport

Sources: Ovila Jean, Mike Rochette, members of the North Hatley curling club board monabitibi.com/top-5-des-raisons-dessayer-le-curling/

THE NORTH HATLEY CURLING CLUB

Next session:

November 3 to January 14. Teams are set up at the start of the season. There's room for you!

Open doors week

From 7 to 9 p.m. For free. Bilingual instructors. It's for everyone.

Junior league (8 to 19 years old)

- Sundays during the day with trainers
- Monday evenings

Senior league (55 years and over, mixed league)

- You may play on Tuesdays, Wednesdays and Thursdays from 9 to 11 a.m.

Adult league

- Evenings from Monday to Friday, from 7 to 9 p.m.



Registration

You may register on site during the first week. The form is also

available on the Canton de Hatley web site.

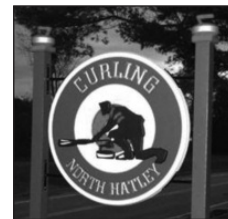
Special price for new members (adults) :
100 \$ REBATE

REGISTRATION :
200 \$ instead of 300 \$

Hall rentals

- The curling club hall may be rented with or without bar and kitchen service
- Can accommodate up to 65 persons
- Ideal for a Christmas party, family event, group activity
- Curling party with trainer available
- Catering available

North Hatley curling club
3245, chemin Capelton
819-842-2655



RECREATION

LIBRARY MEMBERSHIP REFUND

Did you know that, as part of its Recreation Policy, the municipality refunds library memberships.

- 17 years and under: 100% refund of the membership cost, not exceeding 150 \$ per child per year in total surtax refunds
- Adults: 50% refund not exceeding 100 \$ per address



SO HALLOWEEN DOES NOT END AS A HORROR SCENE

Witches, clowns, monsters and draculas are preparing to take to the streets in our neighbourhoods. Despite repeated recommendations from parents and teachers, they will be crossing the streets and running all over the place. Motorists must use extra caution while the little monsters should watch out and behave.

HERE ARE THE BASIC GUIDELINES:

- They should wear short clothes in bright colors as much as possible. A fluorescent band can also be added to the costume.
- It is better to wear makeup instead of a mask that could reduce or block vision.
- It is advisable to walk in small groups and go only on one side of the street or road at a time. They must avoid swerving and running.



- It is important to go through intersections, starting by taking a good look in all directions.
- Never accept an invitation to get into a vehicle or entering a home where you don't know anyone.
- Avoid dark streets and corners and identify Parent-Secours signs to find refuge if necessary.

- You must respect the environment and private property.
- Do not eat anything during the tour. Back at home, it is important to examine your treasure carefully before eating it.

During the evening of October 31st, the full cooperation of motorists is required for the safety of children. So drivers, you must drive at reduced speed while giving priority to children that will cross the streets.



Halloween Visit



During the Halloween evening, come visit one of our parks to collect candy.
Two conditions are required : *to be disguised and meet the challenge!*

Where : Parc Manège (Manège street) and Parc Chaumière (Haskell Hill road)

When : Friday, October 31st – **Time :** 5:30 p.m.