

## A SPRING OF CHANGE



The arrival of Spring 2016 will mark some changes that will affect both citizens and the municipal administration.

### Municipal office moving

As planned, the municipal offices are moving to 4785 Capelton road (Mont Hatley). The move should happen around April 20th and the offices will be closed a few days before and after that date. You have received a flyer with the details.

The renovation of the new offices should be ongoing over the coming months but all municipal services will remain accessible to citizens. We are grateful for your understanding.

### Donation of Scowen park

Council has agreed to transfer Scowen park to the Massawippi Conservation Trust. This will be done in cooperation

with the Scowen Family, who donated the land to the municipalities of Canton de Hatley and North Hatley in 1980. The Massawippi Conservation Trust will protect the land from construction and develop public access nature trails. The municipalities will keep an acre of land on Capelton road for the eventual construction of a fire station.

### Request to open Haskell Hill road

The municipality asked the city of Sherbrooke, by resolution, to open the part of Haskell Hill that is closed. This section, built by the Department of Transport as part of work done to extend Highway 410, was closed during the winter by the city of Sherbrooke.

The municipality received many complaints from citizens about this. Moreover, the municipality considers that the road configuration does not justify closing it in winter.

### Access to Sherbrooke ecocenters

As mentioned in the February municipal newsletter, Canton de Hatley residents now have access to the City of Sherbrooke ecocenters at the same conditions as Sherbrooke residents. This follows from an agreement between the city and Canton de Hatley. We are proud to offer you this access and hope you take advantage of it during your spring cleaning.

### WISHING YOU A SUNNY SPRING!

*Martin Primeau, Mayor*



Liane Breton, Canton de Hatley Director, Martin Primeau, Canton de Hatley Mayor, Margot Heyerhoff, Chair Massawippi Foundation, Michael Page, North Hatley Mayor and Daniel Décary, North Hatley Director.



## MAYOR'S OFFICE

Your Municipal Council



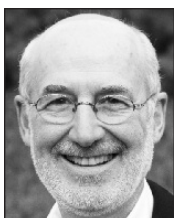
**Martin Primeau**  
Mayor



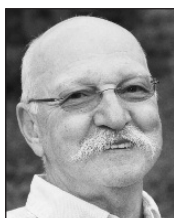
**Patrick Clowery**  
Councillor n°1



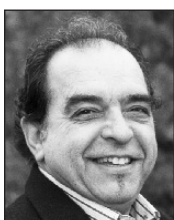
**Vincent Fontaine**  
Councillor n°2



**Jacques Bogenez**  
Councillor n°3



**Claude B. Meilleur**  
Councillor n°4



**Guy Larkin**  
Councillor n°5



**Sylvie Cassar**  
Councillor n°6

### **General Manager**

Liane Breton

### **Assistant to the Director**

Paul Conway

### **Assistant Treasurer**

Annie Deshaies

### **Building and Environment Inspector**

Éric Gravel

### **Public Works Director**

Jean-François Laflamme

### **Recreation Development Agent**

Lucie Levasseur

### **Graphic Design & printing of Newsletter**

Les Publications Municipales – 1 877 553-1955

## MUNICIPAL INFOS

**This summer's day camp will be held at the church located at 201 Main St., North Hatley.**  
**This is because there will be construction at Mont Hatley.**



## FOLLOW-UP ON COUNCIL MEETINGS

### **MARCH 7 COUNCIL MEETING**

#### **1. Minor variance 2016-001**

Council refused this request for a minor variance. The request was to subdivide a lot on Chaumière street with a frontage of 35 metres. The result of the subdivision would be the creation of 2 lots with each a frontage of 17,5 meters. The by-law requires 25 meters of frontage. Council did accept to review the by-law.

#### **2. Zoning by-law 2016-02 is adopted**

Council adopted zoning by-law 2016-02 to modify zoning by-law 2000-08. The by-law is necessary to be consistent with the regional land use plan of the MRC Memphrémagog particularly concerning the definition of a water-course. It also modifies the area allowed for waterside infrastructures and certain measures concerning the shore (high-water mark, boathouses).

#### **3. Adoption of by-law 2016-03 relative to permits and certificates**

Council adopted by-law 2016-03 modifying by-law 2000-11 concerning permits and certificates. A permit will be required from the Ministry of Environment (MDDEFP) for any construction on the shoreline with an area of more than 20 m<sup>2</sup> or if the construction occupies more than 1/10 of the width of a waterway.

#### **4. Request to the City of Sherbrooke concerning Haskell Hill**

Council is asking the City of Sherbrooke to open the closed section of Haskell Hill road so that it remains accessible by route 143 year round.

#### **5. Participation in the PIIRL program (Plan d'intervention en infrastructures routières locales)**

The municipality accepted to participate in this subsidy program in the amount of \$1,243,000 with a 25 % participation from the municipality that is \$310,750 over a period of 5 years.



## **CONTACT INFORMATION**

### **CITY HALL**

135, Main street, North Hatley (Quebec) J0B 2C0  
Tel. : 819 842-2977 • Fax: 819 842-1997  
Email: [info@cantondehatley.ca](mailto:info@cantondehatley.ca)  
Website: [www.cantondehatley.ca](http://www.cantondehatley.ca)

**Opening Hours :** Monday to friday: 8 h at 12 h and 13 h at 16 h







## FOLLOW-UP ON COUNCIL MEETINGS (cont'd)

### 6. Urban planning committee nominations

Council named the following members to the urban planning committee until March 5, 2018: Mr Jacques Bogenez, councillor, Mrs Mia Pascale, citizen and Mr Denis Beaulieu, citizen.

### 7. Mandate to Sentiers Boréals – Pacte rural MRC

Council gave a mandate to the firm Sentiers Boréals to create a multi-use trail on municipal land. The municipality received a \$10,000 grant from the MRC Memphremagog Pacte rural program.

### 8. Mandate for agreement with Groupe Hatley inc.

Council authorized the Mayor and Director to sign an agreement between Groupe Hatley and the municipality. The purpose is to avoid legal proceedings for hidden defects of the building located at 4785 Capelton road.

### 9. Canton de Hatley choir asks for subsidy

The *Canton de Hatley choir* asked for a \$3,600 subsidy. Council accepted to give \$1,000 for the two 2016 concerts.

### 10. List of properties sold for taxes

Council approved the list of properties to be sold for taxes. Council names Mrs Liane Breton, Director and Mrs Annie

Deshaies, assistant treasurer, to represent the municipality at the sale to be held on June 9<sup>th</sup> 2016 at the MRC Memphremagog.

### 11. Offer to the Golf Club – closing of Highland road

Canton de Hatley accepts to transfer part of Highland road for \$25,000. The Golf Club will be required to build a turnaround according to municipal standards and will have to give the municipality a right of way for a foot path along the western line of the Golf Club's property.

## APRIL 4TH 2016 COUNCIL MEETING

### 1. Boat patrol inspectors nominated

Council named the boat patrol inspectors for 2016 : Samuel Morin, Maxime Lefebvre, Sabrina Asselin-Généreux, Isaac Martin, Anthony Leroux and Antoine Lefebvre.

### 2. Permit request for 17 Minton Hill road

Following the recommendation of the urban planning committee, council accepted the construction request for lot n°4 029 665, Minton Hill road. By-law n°2000-13 concerning architectural implementation plans are applicable for this project.

### 3. Contract and mandate for Mrs Lucie Guylaine Levasseur

The municipality hired Mrs Lucie Guylaine Levasseur as year round recreation coordinator. The municipality also gave her a mandate concerning the development of the Massawippi valley in cooperation with the environment inspector, Mr Éric Gravel.

### 4. Scowen park – agreement with Massawippi Conservation Trust

Council accepted to give Scowen park to the Massawippi Conservation Trust. The Trust promises to create walking trails within 5 years. The trails will join up with existing municipal trails.

### 5. Massawippi Conservation Club

Council accepts to give 750 \$ to the *Massawippi Conservation Club*, that is 250 \$ for the stocking of fish and 500 \$ for 2016 Fishing Day (Pêche en herbe 2016).

### 6. Mandate for agreement with Groupe Hatley inc.

Council authorized the Mayor and Director to sign an agreement between Groupe Hatley and the municipality. The purpose is to avoid legal proceedings for hidden defects of the building located at 4785 Capelton road.



## ENVIRONMENT AND CCE

### A WORD FROM THE ENVIRONMENT COMMITTEE

As you know, we have signed an agreement with the City of Sherbrooke to use their ecocenters, which is great news!

You can go to either, free with proof of residence :

- **l'Écocentre Rose-Cohen**,  
365 rue Pépin, (819) 822-6033,  
à l'ouest de la ville
- **l'Écocentre Michel-Ledoux**,  
1000, rue Léon-Trépanier,  
(819) 822-6010, à l'est de la ville

The schedule is Monday to Saturday from 7:30 a.m. to 5 p.m. from April 8 to May 19 and they are also open on Sundays

from 7:30 a.m. to 5 p.m. from May 20 to August 11.

Otherwise, from September to April, the schedule is Tuesday to Saturday from 8:30 a.m. to 3:45 p.m.

But the use of Sherbrooke ecocenters is not the solution to all your recycling problems. If you check the city's web site at <https://www.ville.sherbrooke.qc.ca/sous-site/environnement/collectes-et-ecocentres/ecocentres/>, you can see the list of accepted and unaccepted materials. So, if you have items such as couches, armchairs, mattresses or other items (televisions, computers, etc.) just call

**LA RESSOURCERIE DES FRONTIÈRES**  
at 1-855-804-1018



<http://www.ressourceriedesfrontieres.com/>

This organization is exceptional. Not only do they pick items up at your home for free, but they have an incredible rate of recycling.

More than 90% of objects collected by the Ressourcerie des Frontières are repaired, sold, recycled and only 7% are finally sent to the dump.

I invite you to use this service for which the Canton shares the cost. It's ideal for the



## ENVIRONMENT AND CCE (cont'd)

elderly or those who do not have their own trailer.

Council decided to have just one large item collection this year, which is on May 26. But the goal is to no longer have such a collection. The large item collection is expensive, using trucks to send everything to the dump site without any environmental concern. As we pay by the ton, it's really not a good choice, economically and ecologically.

We have to change our habits and use the available services to maximize recycling, recover our used materials and reduce what we dump. This way we can proudly participate in the sustainable development of our society.

Thank you for your efforts and participation. I think you will appreciate the services offered by the Ressourcerie des Frontières and the Sherbrooke ecocenters.

*Jacques Bogenez*, Environment committee president

### MAXIMUM NUMBER OF BINS PER RESIDENCE

We want to remind you that the municipal council adopted a resolution on January 4th concerning the number of bins allowed per residence. The maximum number accepted per residence is :

- 1 garbage bin
- 2 recycling bins
- 2 compost bins

Every additional bin will be charged 96 \$ per garbage bin. See article published in *Le Babillard*, February 2016, page 3.

### SEPTIC TANK EMPTYING BEGINS IN MAY

The municipality will have all septic tanks emptied over the 2016 summer period. Septic tank emptying will begin May 16 and should end sometime in August. Each property owner will receive a notice about 10 days before the tank is emptied.

Septic tank covers need to be cleared of any obstruction so they may be easily lifted without tools by the contractor.



### ACCESS TO SHERBROOKE ECOCENTERS

Since April 1<sup>st</sup> 2016, Canton de Hatley residents have access to the city of Sherbrooke ecocenter at the same conditions as Sherbrooke residents. It is free and there is no limit to the number of visits. There is a quantity limit of 1,8 cubic meter per visit. Proof of residence is required.



## RECREATION, ACTIVITIES AND EVENTS

### The Canton de Hatley Choir

**Les chemins de l'amour**  
May 1<sup>st</sup> at 4 p.m., Ste-Elisabeth church, 3115 Capelton road, tickets at the entrance \$20

Under the theme "*Paths of Love*" the Canton de Hatley Choir will present its Spring Concert. You will hear excerpts from Waltzes by Brahms and varied folk and world music repertoire.

Directed by Lise Gardner  
819-345-7713



### RECREATION PROGRAM - SPRING 2016

*Take a look at our spring activities!*

Do not wait and register by calling 819 842-2977 or by email at [loisirs@cantondehatley.ca](mailto:loisirs@cantondehatley.ca)

**Here is an overview of our activities:**

#### SPORTS :

Activities continue at the North Hatley School gym:

**Volleyball :** Mondays, April 11<sup>th</sup> to May 30<sup>th</sup>, 7 p.m.-9 p.m., \$12 for 8 sessions.

**Zumba :** Tuesdays, May 3<sup>rd</sup> to May 31<sup>st</sup>, 6 p.m.-7 p.m., \$38 for 5 sessions.

**Badminton :** Wednesdays, April 20<sup>th</sup> to June 1<sup>st</sup>, 7 p.m.- 9 p.m., \$12 for 7 sessions.

#### Two new sports are offered this spring:

**Cardio Plein Air**, an exterior fitness program to enjoy the return of spring: Wednesdays, May 4<sup>th</sup> to June 22<sup>nd</sup>, 7 p.m.-7:45 p.m., \$85 for 8 sessions (meet in Capelton Mines parking lot).

**Cardio Kickboxing**, is a group fitness class that combines martial arts techniques with fast-paced cardio. Thursdays, April 14<sup>th</sup> to June 2<sup>nd</sup>, 6 p.m. to 7 p.m., \$70 for 8 classes.

#### ARTS AND CULTURE:

*Do not miss:*

**Mosaic workshop** using the technique "picassiette" with various recycled materials (dishes, natural and industrial material). Each participant produces an 8 x 10 inches project and is introduced to the manipulation of the basic tools of mosaic. Fun for all ages! With Isabelle

Gauthier, member of the Conseil des métiers d'art du Québec. **Saturday, April 30, 1 p.m. to 5 p.m.** at Salle Lucien Vachon (3115, c. Capelton, North Hatley).

\$30 per person, \$5 for kids 12 years old and under if accompanying an adult registered to the workshop.

#### OUTDOORS CLUB :

Take a 10 km **guided hike** to discover the nature of Canton de Hatley. A unique chance to explore the hills and forests of your municipality. Do not miss it, **Saturday, May 14, 9 a.m. to 13 p.m.** (meet in Capelton Mines parking lot). The event is free but registration is required: 819 842-2977 or [loisirs@cantondehatley.ca](mailto:loisirs@cantondehatley.ca)



### ERRATUM ALIMENTS MASSAWIPPI TEXT

Suzanne Dionne's book *«Le Miso, plus qu'un aliment»...La Vie* is also available in english : Miso more than food : life Note : all Aliments Massawippi products are available at Le Baron general store of North Hatley.



## SERVICES FOR SENIORS

### Services offered

- Meals on wheels (Monday & Wednesday)
- Blood pressure clinic
- Foot clinic
- Friendly visits
- Community meals
- Social events
- Shopping trips
- Support to caregivers

For more information, contact  
Community Aid at 819-821-4779.

We are here to serve you...

## FACTS ABOUT LYME DISEASE

- In 2015, 12 probable cases were reported in the Estrie region.
- 1/3 of municipalities in the region are classified at HIGH risk for exposure to ticks responsible for transmitting Lyme disease including Sherbrooke, Granby and Magog.
- Lyme disease can cause serious complications (joint, cardiac, neuro-

logical) if not treated.

- The uses of bug spray containing DEET is proven to be effective for preventing tick bites.
- If a tick is removed in the first 24 hours the risk of transmission of Lyme disease is much reduced. That's why it's important to inspect your skin after walking where there is tall grass.

### What is Lyme disease?

Lyme disease is caused by the bite of a tick that is infected by a bacteria. The tick is well established in southern Quebec, especially in Montérégie and Estrie. In the past 4 years the amount of people infected in the province has increased.



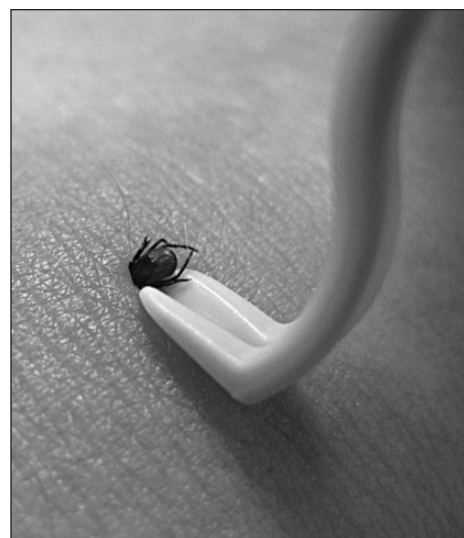
### How to protect yourself

When practicing activities in the woods

- Wear clothing that covers the skin
- Put your socks over your pants
- Wear pale clothing, ticks are easier to spot
- Use bug-spray to avoid bites

- Stay on the open trail
- The risk of infection is present from May to October

In case of tick bite, remove the tick immediately with tweezers. Don't use your fingers as you may crush the tick and contaminate yourself. Remove the tick as soon as possible to reduce the risk of infection.



## Water well owner?

It is your responsibility to make sure that the quality of your drinking water is safe and to prevent any health problems.

### What should be analysed?

#### BACTERIA\* :

#### Test your water at least twice a year

- Risk of nausea, vomiting, diarrhea, stomach ache.
- Presence caused by human and animal activity. \*The analysis includes total coliforms and fecal coliforms, E. coli, enterococci and atypical colonies.

#### NITRATES :

#### Test once a year

- Reduction of the level of oxygen in the blood. Pregnant women and babies are the most vulnerable.
- Presence due to agricultural activities and septic tank systems.

#### ARSENIC :

#### Test at least once

- Carcinogenic substance, naturally present in the ground, especially in the Eastern-Townships.

### When?

During spring and in fall (spring thaw or during heavy rainfalls) or notice a change in the water odour, taste and appearance.

### Where?

Refer to a laboratory that has been accredited by le ministère du Développement durable, de l'Environnement et de la Lutte contre les changements climatiques (MDDELCC), such as:

- **Groupe EnvironeX – Laboratoire d'analyses SM** à Sherbrooke : 819 566 -8855 et Longueuil : 514 332 -6001
- **Groupe EnvironeX - Biolab** à Thetford Mines : 1 800 250 -1516
- **Biovet inc.** Saint-Hyacinthe : 450 771 -7291

Some laboratories provide the possibility of ordering an analysis kit to be shipped at your home. Some costs may be associated.

For more details pertaining to water analysis, the licensed laboratories, to assess the results obtained, the health hazards and the potential solutions due to contamination, we invite you to consult:

"The quality of my well water" on the MDDELCC website: [www.mddelec.gc.ca](http://www.mddelec.gc.ca) "Eau potable" on the CIUSSS de l'Estrie CHUS website: [www.santeestrie.qc.ca](http://www.santeestrie.qc.ca)

If you suspect any health problems linked to the quality of your water, communicate with Info-Santé 8-1-1.

### Did you know?

Your water may be clear, odourless and pleasant to drink, but may contain some bacteria and chemicals hazardous to your health. Some treatment devices installed to improve water appearance (water softeners, active carbon filters, greensand filters) do not eliminate the health risk hazard.







# LE POTAGER D'EMYLOU



Pierre Legault and Emylou Desrosiers from Le Potager d'Emylou.

## Meeting the challenge of organic production

Emylou Desrosiers was 19 years old when she began the Potager d'Emylou adventure. Captivated by the desire to start her own business, she started with some basic knowledge of organic vegetable production. « If I had to start over, I might have gotten more experience before starting my own business. But we learn from our mistakes! » says Emylou.

Despite the early challenges, « organic vegetable production gives you much in return, a give and take with nature, an incredibly gratifying satisfaction of sharing the bounty of the land with our neighbours » says Emylou.

## The market

The Potager d'Emylou market is open year round. What will you find? Organic vegetables from the farm but also many local products. There's always something new. « The market is always evolving, it's very stimulating » says Emylou.

## Baskets

Customers may sign up for the vegetable basket delivery. The baskets are distributed every two weeks. There are many drop off

points in the region. In 2001, the first year of basket distribution, there were 15 customers signed up. This year, there are 150. « We've even had more than that but there are many young agricultural businesses that now offer vegetable baskets » mentions Emylou.

## Vegetable production

Le potager d'Emylou produces more than 50 varieties of vegetables, herbs and fruits. The most important production is root vegetables, including parsnips, beets, celeriac, Jerusalem artichokes, etc. There is also leek and cucumber.

Each week brings a new product. Regarding production, Emylou says that « negotiating with Mother nature is a motivating challenge. »



About 50% of the Potager d'Emylou's production goes to the market or to the basket distribution. The other 50% is sold through distributors in Montreal and the United States.

## Employees

At the height of the season, there are 12 to 15 employees. About half the employees were born in Québec but the others are immigrants, including many Colombian. « They have a hard time finding work in Québec and they are also used to the kind of work required in the agricultural sector » explains Emylou. For them and for the Potager d'Emylou, it's a win-win situation.

## Partners

« My father has been my greatest partner by letting me farm his land all these years. Also the network of producers in the region who encourage and support each other. »

All Canton de Hatley residents are invited to visit the market at 105 Haskell Hill road to discover a variety of local and organic products. Haskell Hill road is accessed by Belvédère sud street. During the winter, the market is open on Wednesdays from 3 to 6 p.m. and on Saturdays from 10 a.m. to 2 p.m.. The summer schedule will be available on the web site <http://www.potageremylou.net/>.

