



IT'S SUMMER!

Summer has finally arrived. It's the season that gives us the most opportunities to enjoy the outdoors, whether it be on our own or with family and friends.

By virtue of its topography, attractions and characteristics, our municipality is an exceptional place to practice many sports. The bike path and the winding hilly roads attract many cyclists and young families. The Massawippi river's calm waters is great for canoe and kayak enthusiasts. For hikers, there are many walking trails with exceptional settings.

Over the years, the municipality has given itself a strong environmental orientation. This vision is reflected in the municipality's actions and recreational offer. The development of the Massawippi valley is the perfect

example of measures taken for our active population.

The appeal of our region is undeniable. Canton de Hatley and its municipal neighbours offer many exceptional lodging possibilities. Their owners are passionate about what they do and offer high quality lodging, making our region especially attractive to an ecotourism clientele.

So, I invite you to promote our beautiful region with your family and friends.

Cooperation between Québec municipalities is more and more common. This allows them to achieve projects that would otherwise be financially impossible. For example, we can cite the Régie des eaux Massawippi, that allowed the construction of a multi-million dollar water treatment plant with North Hatley.

Or the new fire protection agency, the Régie de l'Est, which brings together 10 fire departments from the Memphrémagog and Coaticook regions. This

partnership allowed us to develop a long term vision of public service and to hire a director to see it through. We can also mention the Parc régional Massawippi, bringing together the five municipalities around lake Massawippi. Its latest achievement, the Wippi shuttle, will connect North Hatley to Ayer's Cliff.

Many such opportunities are possible for our municipality. They allow for better coordination between municipalities and some economies of scale. We can't ignore the fact that we have a lot in common with our neighbouring municipalities. I don't believe our territorial identity should limit our collective well-being. Its the bridges that we build that make our community stronger. It is much more useful and appealing then a divide.

**I wish you all a great summer
and hope you enjoy the outdoors
in our beautiful region.**

Martin Primeau, mayor

THE MUNICIPALITY HONORS A YOUNG LOCAL ATHLETE

The municipality gave a \$300 bursary to Mrs Marilou Beaudry as recognition for her talent and sports excellence in synchronized swimming. Mrs. Beaudry has participated in provincial, national and international competitions.

She is also the first recipient of a bursary following the municipal policy to support youth excellence.



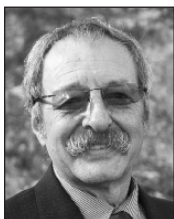
**Marilou Beaudry with Mayor
Martin Primeau and councillor
Maryse Gaudreau.**



Your Municipal Council



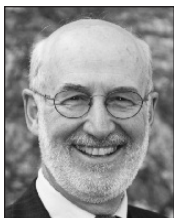
Martin Primeau
Mayor



Patrick Clowery
Councillor n°1



Vincent Fontaine
Councillor n°2



Jacques Bogenez
Councillor n°3



Maryse Gaudreau
Councillor n°4



Danielle Côté
Councillor n°5



Sylvie Cassar
Councillor n°6

General Manager

Kyanne Ste-Marie

Assistant to the Director

Paul Conway

Assistant Treasurer

Annie Deshaies

Secretary Receptionist

Valérie Brassard

Building and Environment Inspector

Éric Gravel

Public Works Director

Jean-François Laflamme

Recreation Development Agent

Catherine Duguay

Graphic Design & printing of Newsletter

Les Publications Municipales – 1 877 553-1955

CANDIDATE DATABASE

Give us your application at any time, even if no job offer is posted!

A spontaneous application allows you to offer your services without a recruitment ad. These applications are analyzed as soon as needs arise.

The municipality is looking for candidates for various work in the municipality:

- Snow removal work
- Public works
- Manual labor
- Housekeeping & cleaning services
- Land and building maintenance

If you are interested, please send us your c.v. at info@cantondehatley.ca

DID YOU KNOW?

Québec has 1110 municipalities for a population of 8.2 million.

Ontario has 444 municipalities for a population of 13.6 million.

NEW! LAKE MASSAWIPPI SHUTTLE

The Wippi: a shuttle for cyclists and pedestrians

- Departures from North Hatley and Ayer's Cliff
- Duration: about one hour
- 10 \$ one-way / 20 \$ return
- Thursday to Monday included (June 23rd to September 3rd)

By reservation only
(online payment available)

www.parcmassawippi.com

819-679-2395



CONTACT INFORMATION

CITY HALL

4765, chemin de Capelton, Canton-de-Hatley (Quebec) J0B 2C0

Tel.: 819 842-2977 • Fax: 819 842-1997

Email: info@cantondehatley.ca

Website: www.cantondehatley.ca

Opening Hours : Monday to Friday: 8:00 a.m. to 12:00 p.m. and 1:00 p.m. to 4:00 p.m.



LANDFILL

Do you need landfill for your property? Please contact the municipality at 819-842-2977.

WATCH OUT FOR HEAT STROKE!

We can never say it enough: a vehicle can quickly become an oven. During the summer months, stay on the side of caution. **This summer, stay cool with your dog: never leave your dog alone in the car.**



**Société
protectrice
des animaux** de l'Estrie





MAY 7TH, 2018 COUNCIL MEETING

1. 2017 financial statements

The director general tables the 2017 financial statements.

2. Massawippi conservation club

\$850 is donated to the *Massawippi conservation club*. \$350 to support fish release and \$500 to support the *Fête de la pêche*.

3. Use of the municipal truck

Council authorizes Jacques Bogenez to use the Ford F-150 pick-up truck and the trailer for the spring ditches clean-up.

4. By-law 2010-10 dedicated fund

The available balance of loan by-law 2010-10 of \$775 000 for public infrastructures servicing lots located in the *Plateau Massawippi* development will be used to absorb the legal expenses in the file of 9184-1482 Québec inc. vs the municipality and the quittance in the out-of-court settlement.

5. Massawippi Vocal Ensemble

The municipality supports the *Ensemble vocal Massawippi's* 2018 concerts with a donation of \$2 500.

6. Permit for 3270 Capelton road

Council accepts the permit request for a residential construction at 3270 Capelton road. By-law 2000-13 concerning architectural integration applies to this project.

7. Environment committee nominations

Danielle Côté, Sylvie Cassar, Marie-Michèle Dorais, Jean-Claude Favreau and Sylvain McLean are named to the environment committee.

8. Age-Friendly community committee nominations

Catherine Duguay, Sylvie Cassar, Jan Draper, Yvette Savard, Patrick Clowery, Gylles Sauriol and David

Wright are named to the MADA (Municipalité amie des aînés) committee.

9. Chaudières-Appalaches 9-1-1 call center

The municipality will sign an agreement with the Chaudières-Appalaches 9-1-1 call center as of January 2019.

10. Request to Canada Post for community boxes

The municipality asks Canada Post to centralize the distribution of mail for Haskell Hill road.

11. Road widener equipment for public works

The municipality will rent the *RouteXT standard* road widening equipment from Équipement Conderoc for 6 months with an option to buy.

12. Régie de l'Est

The municipalities of Stanstead-Est and Barnston-Ouest join the Régie intermunicipale de prévention et de protection incendie Memphrémagog Est.

13. Financial aid for youth excellence – Sports

A \$300 bursary was given to Mrs Marilou Beaudry in recognition of her talent and sports excellence in synchronized swimming. It's the first bursary given following the municipality's adoption of a policy to support youth excellence in sports, culture and science.

JUNE 4TH, 2018 COUNCIL MEETING

1. By-law 2018-03 is adopted

By-law 2018-03 amending by-law 2017-12 concerning the paving of Haskell Hill and Chaumière roads and its financing is adopted

2. 2018-04 draft by-law concerning public notices is adopted

Draft by-law 2018-04 concerning public notices is adopted. All municipal public notices are published on the municipal web site and posted on the bulletin board outside the main entrance to the Town Hall.

3. Committee members code of ethics

Council adopts a code of ethics applying to committee members.

4. Boat sticker agents

Council names the agents responsible for issuing boat stickers.

5. N4 internet solutions technical evaluation

N4 internet solutions is mandated to do a feasibility study for the installation of relay towers to provide high speed internet for Canton de Hatley residents.

6. Sale of lots 4170495 and 4170496

The municipality sales lots 4170495 and 4170496 to the owner of 5640 Capelton road.

7. Conseil Sport et Loisir de l'Estrie

The municipality joins the Conseil Sport et Loisir de l'Estrie for 2018-2019 for \$100.

8. Light at the corner of Boisé and Chêne-Rouge

The municipality authorizes the installation of a street light by Hydro-Sherbrooke at the corner of Boisé and Chêne-Rouge.

9. North Hatley library

The municipality donates \$500 to the North Hatley library for 2018.

10. Meals on wheels

The municipality donates \$300 to the Lennoxville Community Aid and Meals on Wheels in Canton de Hatley for 2018.



BE VIGILANT! THE TICKS ARE HERE.

Lyme disease, now endemic to the Eastern Townships, is caused by the bite of an infected tick.

Signs of an infection often include a rash around the tick bite. As ticks are more and more present in Québec, it is important to take the necessary precautions.

You were bit by a tick in the Eastern Townships?

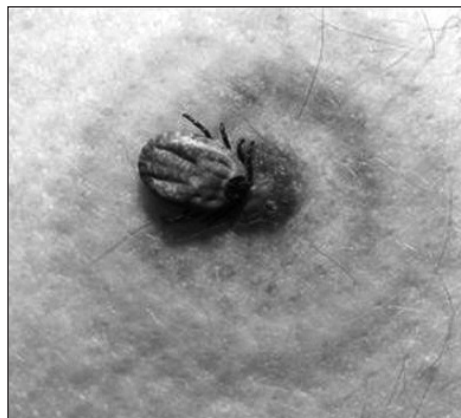
- Remove the tick with tweezers



- Call 811 Health information: a preventive treatment may be recommended

- Place the tick in a container. Note the date and place where you were bit. This information might be useful if you consult a doctor.

- Consult your doctor or a medical clinic if you show any symptoms within 3 to 30 days of the tick bite.



For more information :
<http://sante.gouv.qc.ca/problemes-de-sante/maladie-de-lyme/>



INVASIVE EXOTIC SPECIES

Did you know? Many invasive exotic species were introduced by amateur gardeners. The plants “got away” from their flower beds. Seeing as they have a great capacity for adaptation and reproduce easily, they proliferate rapidly replacing indigenous vegetation.

The five main exotic invasive species in our region:

- Giant hogweed (Beware: causes severe burns)
- Japanese knotweed
- Common Reed
- European Buckthorn
- Eurasian Watermilfoil

For more information: flyers available at the Town Hall or on the Canton de Hatley web site.

Sentinelle – exotic invasive species detection tool

Locate, take photos and report exotic invasive species when you see them in your professional or recreational activities. That way, you will be doing your part to protect Quebec's biodiversity.



Giant hogweed (Beware: causes severe burns)



Japanese knotweed



Common Reed (phragmite)



European Buckthorn



Eurasian Watermilfoil

ENVIRONMENT COMMITTEE ACTIVITIES

Tree and compost distribution

The municipality distributed more than 600 small trees of different species and five truckloads of compost on the morning of May 19th. Compost was produced through citizens' use of the brown bins. The more we compost the more we will have to distribute. We also used the occasion to do a survey concerning composting. Results will be communicated later.

Finally, more than a hundred citizens benefited from this event.

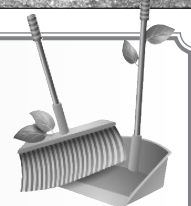
A great success.



ANNUAL SPRING CLEAN-UP OF DITCHES

A dozen people participated in the clean-up of ditches on Sherbrooke, Hatley Center and Lac roads held on Saturday May 12th. A trailer full of garbage was collected.

Thanks to our volunteers!



COMMUNITY

Hall rental for your events

Access to the adjacent yard. Large parking area. Exceptional site. Reduced rate for residents.



Council hall

The council hall, located behind the main entrance of the Town Hall, is spacious with high ceilings. Ideal for receptions, weddings, etc. Capacity of more than 100 persons.

Community hall

The community hall, located in the basement, is equipped with a kitchen, bathrooms for men and women, a coatroom and a piano. Ideal for children's birthday parties or other family reunions.

Installation of address sign posts

Following by-law 2018-02 concerning the installation of address sign posts, the Municipality will be installing address sign posts for all properties for which an address has been attributed. The installation should begin in July and last a few weeks. Spectralite Signoplus is mandated and will need access to your property to do the installation.





ARBORESCENCE DESIGN

SOMETIMES A PROFESSION CHOOSES YOU



Mélanie-Alexandra Beauchamp



**Web design and graphic design
Boutique & workshop**
222 Mill street, North Hatley, QC
819.679.7472
arborescencedesign.ca

Mélanie-Alexandra Beauchamp is local artist, graphic designer and web entrepreneur. She also recently opened up shop in North Hatley village.

"I think my profession chose me", explains the founder of Arborescence Design.

After a few years of travel and work in western Canada, she completed a bachelor's degree in visual arts. She also learned graphic design through her work with the Hatley company. A few years later, an illustration and translation contract became a job in graphic design with Jay Peak ski resort. She had become a graphic designer.

Artistic process

"The artist in me is inspired by what I see (...): the sunlight at a certain time of day, architecture, the texture of rock or wood (...), but also by what I feel and the need

to express something true and deep", mentions Mélanie-Alexandra.

From inspiration begins the real work, the creative process: "The initial research, the collection of objects or materials and inspiring images, the development of ideas and sketches and finally the actual shaping of a creation. One of the reasons I started my own business was to be able to follow the creative process from beginning to end."

The business's name, Arborescence Design, is actually the result of both inspiration and creative process. It is the result of research for a strong and representative symbol; the arborescence (tree structure) of branches and roots that create a unique single whole.

Listening

"I really take the time to listen to my customers to understand what they want and communication is very important throughout the projects I have with them. I want the graphic creations to be an extension of who they are", she explains.

"What I am most passionate about is the moment I feel like I really understand my customer, that I grasp the atmosphere I want to sense from the visuals (logos, business cards, advertising, web site, etc.) and I hit the drawing board or my computer, to transfer the ideas in my head into actual images." she adds.

With most of her customers the contact person is also the owner, so they can really share the passion they have for their business and its history; that way she can really get to know them.

Virgin Hill
coffee company,
visuals by
Arborescence Design



Long lasting business relationships

Mélanie has developed long term business relations with her customers, like the Virgin Hill coffee company. "They have been my customer for over a decade and I've had the chance to work on all their visuals from logo to packaging. I've had the chance to use my artistic talents to individually illustrate each of their coffee blends. I'm happy to have felt their confidence and appreciation over the years. I also enjoy their coffee every morning!"

Solitary creation

"This profession is not for everyone.", says Mélanie. "You have to listen to the customer, to see what he or she sees. You have to be able to manage many projects at once and often at the last minute. You also have to enjoy being creative and be capable of focusing for hours in front of your computer." Incidentally, she missed working physically over the years, with real materials.

New boutique

"I want to create and work manually more often. By opening my boutique in North Hatley, I get to move more and to meet lots of interesting people!" she says about her new project.

You may visit Mélanie at her boutique at 22, Mill street in North Hatley, in front of the Marina close to the public parking.