



Municipal Newsletter

Le Babillard

Municipal Information Newsletter • Volume 09, number 02 • Summer 2021

CANTON DE HATLEY



Photo credit: Marc Richard

www.cantondehatley.ca

2	Word from the Mayor
3	Financial Report
5	Municipal Council Meetings
6	Environment
8	Job Offer

MEMBERS OF THE MUNICIPAL COUNCIL



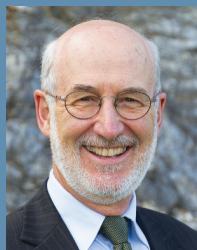
COUNCILLOR 1

**Patrick
Clowery**



COUNCILLOR 2

**Vincent
Fontaine**



COUNCILLOR 3

**Jacques
Bogenez**



COUNCILLOR 4

**Maryse
Gaudreau**



COUNCILLOR 5

**Danielle
Côté**



COUNCILLOR 6

**Sylvie
Cassar**

MUNICIPALITÉ DU CANTON DE HATLEY
4765 chemin de Capelton
Canton-de-Hatley (Québec) J0B 2C0
Tel.: 819 842-2977
Fax: 819 842-1997
Email: info@cantondehatley.ca

Graphic design and printing:
Les Publications Municipales Inc.
1 877-553-1955

WORD FROM THE MAYOR

High speed internet lands in the Canton

As Yvon Deschamps said so well: "I will believe it when I see it". After all these years in politics, this is the phrase I adopted when I was told about high speed internet in the Canton. We have worked so hard over the past few years to make this technological tool accessible to our citizens and, have experienced so much frustration in the many discussions with the people involved as well as the endless requests with no results, that it was hard to believe it. However, a few weeks ago, I had a last-minute meeting with the people from Cogeco who told us that they were in the last phase of deployment, for two sectors of Canton de Hatley. What a happy surprise for us. The program called "Brancher pour innover", which began in 2016 and in which we participated, would end finally see results in the fall of 2021.



At the same time, the provincial government, through our MP, Gilles Bélanger, announced the creation of a new program. This initiative had a short deadline in fall 2022. For the MRC Memphrémagog, it means nearly 3,000 new homes would get high speed internet. With this announcement, the Canton of Hatley will see all of its homes finally go digital.

To find out more, I invite you to watch the video available at this address cantondehatley.ca/deploiement-dinternet-haute-vitesse/ where I explain in detail the actions that have been taken for 8 years and especially the details of the Cogeco project in our territory. Obviously, the newsletter from the municipality is the best way to receive the latest updates on this issue. All you have to do is sign-on through our website. In addition, you can follow us on the municipality's Facebook site.

Pedestrian Bridge

As we mentioned to you in a previous newsletter or via the various media covering this news, we have been developing trails in the Massawippi valley for several years. The news of the construction of a pedestrian bridge spanning the river has delighted many of you. We are pleased to announce that the MRC Memphrémagog has agreed to contribute an amount of \$ 150,000 through the Fonds régions et ruralité (FRR) as part of its *Politique de soutien aux projets structurants pour améliorer les milieux de vie*. This contribution was essential to the realization of this project. Now that the funds are confirmed, we can go ahead and hope to gain access to those 250 acres in a near future. A pedestrian activity that will please many outdoor enthusiasts.

Régie incendie de l'Est

I am currently working hard on the dossier of the Régie Incendie de l'Est, in connection with the investments planned for the coming years. In my research work, I had the chance to discuss with OPTA, the firm responsible for fire ratings for Quebec insurers. I wanted to bring to your attention the importance of information relating to the distance of a barracks (less than 8km) and the presence of a municipal water network (fire hydrant) from your residence. These factors can influence the fire insurance premium on your home by up to 20%. This is not negligible. If you have any questions about the fire service at your home, I invite you to contact us.

Summer is finally here!

Winter has been long for many of us but luckily, as the beautiful season is upon us, the deconfinement plan is well underway, I hope that you will take advantage of our beautiful region. As you will read later in these pages, the beach is still available this summer to our residents for free and the Wippi shuttle is back in service on Lake Massawippi. I strongly recommend these two activities to you during the hot season. Like many of you, with the gradual return to normality, I am planning a few dinners with friends and family to make up for lost time. Finally.

The municipal council and myself wish you a wonderful summer season.

Martin Primeau, mayor

FINANCIAL REPORT

MAYOR'S REPORT ON THE FINANCIAL SITUATION

Dear citizens,

Under article 176.2.2 of the Municipal Code, I present to you the 2020 financial report.

Consolidated financial report

The consolidated financial report includes the following partnerships: Régie du Parc régional Massawippi (20%), Régie intermunicipale de protection incendie North Hatley et Canton de Hatley - RIPI (53.55%), Régie incendie Memphrémagog Est (11.08%), Régie des eaux Massawippi (24.5%) and the Régie intermunicipale de gestion des déchets solides de la région de Coaticook (2.75%). However, in order to help understanding, we will present the highlights of the municipal portion only. The consolidated report is nevertheless available on the cantondehatley.ca website. The consolidated report ends with a final surplus of \$ 263,704 for fiscal year 2020.

Municipal financial report

The financial statements for 2020 were audited by the firm Raymond Chabot Grant Thornton. For 2020, revenues were \$ 4,079,291 while expenses and allocations were \$ 3,996,086 leaving a surplus of \$ 198,396.



Fixed assets

The main acquisitions in 2020 fixed assets include:

- Used 10-wheel truck \$ 76,641
- Snow removal equipment for trucks \$ 96,139
- Used grader \$ 89,502
- Water pumps for the municipal garage \$ 25,336
- Municipal parking lot \$ 61,794

This year's surplus is mainly explained by the Covid-19 financial support for a total amount of \$ 142,000. This amount allowed the municipality to adjust to all the measures imposed by the pandemic, to continue its partnerships, to support organizations and to absorb the loss of income from several activities. This amount will also make it possible to adapt to the situation for the year 2021. In addition, the year 2020 was an exceptional year in terms of real estate sales, earning the municipality \$ 95,000 more in transfer taxes compared to the previous year's anticipated budget. Finally, the *Pacte fiscal pour des municipalités et des régions encore plus fortes* enabled us to raise an additional \$ 45,000 in 2020.

In conclusion, the municipality's financial health is doing very well, thanks to its constant concern for rigor and efficiency in the management of its resources.

Rest assured that your municipal council will continue to plan effectively in order to offer quality services while respecting the ability of citizens to pay

Thank you for your continued support.

Martin Primeau, mayor

COMMUNITY

PLEASANT VIEW BEACH (NORTH HATLEY)

Free for residents of North Hatley and Canton de Hatley. However, you must register at the North Hatley Town Hall.

Supervision hours (subject to temperature)

June 21 to August 20, 10 a.m. to 9 p.m.
(depending on the time of sunset)

August 21-22, from 10 a.m. to 8 p.m.

August 28-29, from 10 a.m. to 8 p.m.

September 4, 5 and 6, 10 a.m. to 8 p.m.

Daily rates

Non-registered children: \$ 3

Non-registered adults: \$ 7

MASSAWIPPI BEACH (AYER'S CLIFF)

Free entrance - parking \$ 10

Canton de Hatley residents may obtain a seasonal parking pass from the municipality for \$ 25.

Swimming hours with lifeguard

Until August 29 inclusively and September 4-5-6

Open from 12 noon to 6 p.m. (subject to temperature)

For all the details:

parcmassawippi.com/plage-massawippi



PHOTO SEARCH FOR THE 2022 CALENDAR

We are looking for the most beautiful photos of the Canton for the annual calendar. Do you have a magnificent view or a little corner of paradise for us to discover in Canton de Hatley? Please feel free to send us your photos throughout the year at reception@cantondehatley.ca. Your participation is greatly appreciated!

COMMUNITY

NORTH HATLEY COUNTRY MARKET

- Saturdays from 10 a.m. to 12 p.m., from June 19th to October 10th, at River Park
- About thirty merchants and artisans: fresh products, etc.

COMMUNITY HELP

- Meals on wheels (Monday and Wednesday)
- Blood pressure clinic
- Foot care clinic
- Friendly visits
- Community meals
- Social events
- Shopping
- Support for caregivers

For more information, contact Community Help at 819-821-4779 or Judy Bean at 819 842-2995.

WIPPI SHUTTLE

"Le Wippi" shuttle navigates the waters of Lake Massawippi:

- Approximately one hour journey.
- 6 trips per day, until September 6.
- Thereafter, September 11, 18 and 25 (Saturday only). Weather permitting, there will be additional trips on October 2, 9, 10 and 11, 2021.
- With a capacity of 12 people, with or without their bikes.



- Sails between the villages of Ayer's Cliff and North Hatley from the municipal docks.

The Wippi is equipped with supports to keep the bikes in place during the journey. This is an excellent way to connect the Les Grandes-Fourches cycle path (via the summit axis or the Massawippi axis) to that of the Tomifobia Nature Trail.

Trip cost: \$ 20 one way (\$ 30 round trip)

Family package: \$ 100 (1 or 2 adults accompanied by children 12 and under)

Departure times:

Ayer's Cliff to North Hatley
10 a.m., 1 p.m. and 4 p.m. (last departure)

North Hatley to Ayer's Cliff
11:30 a.m., 2:30 p.m. and 5:30 p.m. (last departure)

Online reservation: lewippi.com

More details on the website:
northhatley.org/en/wippi-shuttle-2

VEGETATION CONTROL

HYDRO-QUÉBEC - VEGETATION CONTROL

Hydro-Québec is asking for the cooperation of the citizens of Sainte-Catherine-de-Hatley, Canton de Hatley and the village of North Hatley in order to improve the quality of electrical service.

In order to improve the quality of electricity service, Hydro-Québec will carry out major vegetation control work in 2021 in the territories of Sainte-Catherine-de-Hatley, Canton de Hatley and the village of North Hatley.

There are more and more major climatic events. They have a direct impact on the number of failures and on the recovery times of the service. During strong winds, severe thunderstorms, or a snow or ice storm, a falling tree or branch that touches a grid element can cause a power outage. In addition, the denser the vegetation and the closer to the power grid, the greater the risk of blackouts, and the more difficult it becomes for Hydro-Québec workers to intervene.

In order to reduce the vulnerability of the electricity network and ensure public safety, Hydro-Québec, with the support of your municipality, will put forward sustained interventions to control vegetation: pruning of nearby branches network and tree felling that could cause power outages.

Before cutting down trees deemed to be dangerous, Hydro-Québec must obtain authorization from the owners concerned. In recent months, a Hydro-Québec forestry technician has contacted these owners for this purpose.

Hydro-Québec is counting on your cooperation to ensure the success of these interventions, which are essential to improving the quality of service.

For your information:

Before planting a tree near the network, it is recommended that you consult the tool for choosing the right tree or shrub on the Hydro-Québec website. It will allow you to check whether the chosen species or variety respects the safe planting distance from medium voltage wires, or to choose one that suits the available planting space:

<https://arbres.hydroquebec.com/search-trees-shrubs>

For more information:

For any questions about these interventions, please contact Hydro-Québec:

Info-Projects line: 1 877 653-1139
ramrichelieu@hydro.qc.ca



Summer 2021

APRIL 12, 2021 COUNCIL MEETING

Boat stickers for non-residents

The price of boat stickers (user certificates) for non-residents is increased to \$ 350 for the 2021 season.

Sharing of recreation costs

The Municipality is reimbursing \$ 20,565 to North Hatley under an agreement to share the costs associated with recreation. The agreement notably includes the management of the beach in North Hatley.

Intermunicipal boards loan by-laws

The municipality approves loan by-laws of inter-municipal boards of which it is a member:

- Régie du Parc Massawippi - \$ 500,000 for the construction of utility buildings, the purchase of docks and other equipment.
- Régie incendie Memphrémagog Est - \$ 747,000 relating to the acquisition of breathing apparatus, service vehicles, combat clothing, updating the air compressor in fire station 1 and upgrading the communication system;
- Régie de Coaticook - by-law relating to work to upgrade the capacity of the leachate water treatment plant for a maximum amount of \$ 5,700,180.

New agreement between Magog and the Régie de Coaticook

The municipality agrees that the terms of a new Régie agreement can integrate the points requested by the City of Magog to adhere to it.

Appointment of the nautical patrol

The municipality appoints, as every year, the members of the Lake Massawippi nautical patrol for the 2021 season.

Refunds applicable to day camp

The municipality authorizes the reimbursement, to residents of Canton de Hatley, of \$ 30 per child per week for registration in the 2021 Youhou! day camp.

MAY 3, 2021 COUNCIL MEETING

2020 Financial report - highlights

The director general submits the 2020 financial report. The mayor presents the highlights to the municipal council.

Adoption of a supplementary duty by-law

The Municipality will require the payment of a supplementary duty of \$ 200 for transfer duties when there is exemption from payment of transfer duty.

Rate of transfer duties

The municipality will adopt a by-law aimed at setting a higher rate on the valuation bracket that exceeds \$ 500,000, when the municipality collects a duty on the transfer of any immovable located in its territory. The municipality collects transfer taxes calculated according to the applicable property value base brackets and according to the following rates:

\$ 500,000 to \$ 750,000: 2%
\$ 750,001 to \$ 1,000,000: 2.5%
Over \$ 1,000,000: 3%

By-law 2021-08 concerning contractual management

The municipality will adopt a by-law, under Bill 67, including measures to promote Quebec goods and services and suppliers, insurers and contractors who have an establishment in Quebec.

Régie de Coaticook - Loan By-law

The municipality approves the loan by-law of the Régie de Coaticook relating to the establishment of cell number 4 of the technical landfill site for an amount of \$ 1,141,925.

Hiring of seasonal employees

The municipality is hiring two public works workers for the summer: Keven Gaulin and William Giguère. It is also hiring an environmental inspection assistant, Ms. Katherine Hackett.

Donation to the Ensemble Vocal Massawippi

The Municipality is donating \$ 2,500 to the Ensemble Vocal Massawippi to support its activities and concerts in 2021.

Donation to the Lake Massawippi Conservation Club

The Municipality is donating \$ 850 to the Lake Massawippi Conservation Club to support its activities and infrastructure in 2021.

SUSTAINABLE SOLUTIONS TO REDUCE WASTE TO THE LANDFILL

With a view to responding to the Politique québécoise de gestion des matières résiduelles and, by the same token, reducing the amount of waste sent to the landfill site, the municipality has put in place over the past three years a range of sustainable and innovative measures to better manage our residual materials. Among these solutions, we find the voluntary glass deposit which diverts this material towards remelting rather than to landfill; changes to the pick-up schedule that further encourage composting and recycling; the one-off reduction in the selling price of the blue bin to encourage recycling; or even the cleaning of the illegal dump between Route 108 and Kingdom road to pick up and recycle materials.

Can we further reduce material to landfill? We believe so. At least, that's what the new **Four Times Rather Than One** project is aiming for: four sustainable solutions to reduce the amount of waste to landfill. The project began with the characterization of large garbage items pick-up from last Spring.

Characterization of large waste

During the annual pick-up of large garbage items on June 4, 2020, the municipality sampled 709 houses on its territory. The exercise consisted of establishing a portrait of the large garbage items deposited on the roadside. Thus, out of 709 houses inventoried, 243 residences, that is to say 34% of them, had put items on the roadside.

The characterization was carried out using a sheet identifying 10 categories allowing the classification of large refuse deposited on the roadside. Following the compilation and the field observations, four observations emerge.

- 1- Between 70% and 80% of the collected materials could have been recycled, recovered or valued instead of landfilled. This high percentage leads us to believe that part of the population is unable to separate the materials to be recovered from those to be landfilled.
- 2- The majority of the materials deposited on the roadside were not large ultimate waste, that is to say bulky waste impossible to put in the black bin or ultimate residues destined to landfill since a very large part of these was recyclable, reusable or recoverable. In this context, we believe that the definition of large ultimate waste is little known to the Canton de Hatley population, as are the possible alternatives to landfill.
- 3- A very wide variety of materials were inventoried during the large garbage items pick-up, i.e. more than a hundred classified into more than 10 categories (metal, electronic devices, electrical appliances, household appliances, furniture, fabrics, construction materials, tires, compostable materials, composites and plastics). This wide variety of materials is a major challenge that requires each of us to separate recyclable, reusable and recoverable materials from actual ultimate waste.
- 4- The large volume of materials inventoried shows us that the Sherbrooke ecocentre service, offered free of

charge by the municipality, is largely under-used since a significant part of these materials could have been recycled there.

Thus, in the 2020 large items pick-up, 51 tons were collected on the territory of the municipality, i.e. approximately 162 kg per residence. Over the past three years, the volume of materials from the large item pick-up has continued to increase, going from 40 tons in 2018 to 50 tons in 2019 and then to 51 tons in 2020. This tonnage, already very appreciable, excludes materials thrown into the black bin, which alone represent 360 tons going to landfill for the entire municipality, or about 400 kg per residence per year (MRC waste characterization report, 2018).

It is on the basis of these four observations and the many services already offered by the municipality that council decided to replace the current formula of large items pick-up with a new eco-responsible project that aims to improve our civic practices.

Four times rather than one: four sustainable solutions to reduce the volume of waste going to landfill.

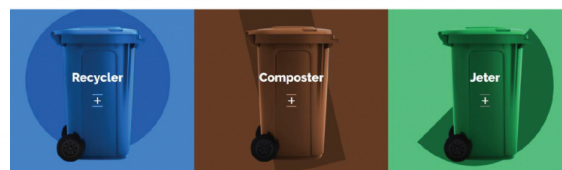
What is the *Four Times Rather Than One* Project? As of this winter, the municipality has implemented four sustainable solutions to reduce its volume of landfill waste. This will run until August 2021, when the latest ultimate waste pick-up solution is implemented. The four solutions are:

- *Better separation of the materials to be placed in the 3 bins* using advertising in our newsletter and tools including the abcdebacs.com website
- *Maximize citizen participation in recovery and recycling* by using the Sherbrooke ecocentres as a front-line service.
- *Set up a new special pick-up for the recovery of metals* in August 2021 which will be done before the pick-up of large ultimate waste.
- *Set up the new pick-up of large ultimate waste* in August 2021 and provide the population with a tool to separate recyclable materials from ultimate waste residues (list).

To complete this entire project and reduce the amount of waste going to the landfill, we need your valuable civic participation. Efforts and collective adherence to eco-responsible values and good sustainable development practices remain essential to ensure the success of this project and to preserve the environment of our rural municipality.

Danielle Côté for Town Council

ABC DES BACS



It goes to the ecocentre!

**DID
YOU
KNOW**



Objects and materials that are not large ultimate waste are accepted free of charge at the Sherbrooke ecocentres.

Free access for Canton de Hatley residents with proof of residence.

MATERIALS ACCEPTED AT SHERBROOKE ECOCENTRES THAT ARE NOT LARGE ULTIMATE WASTE:

Furnishing: Mattresses, wooden furniture

Sporting goods: Bicycles, tricycle, children's bike, scooter, golf clubs, skis

Appliances: Refrigerator, freezer, oven, microwave oven, air conditioner, washer, dishwasher, dryer, stove, fountain, cooler and water dispenser

Small appliances: Barbecue, kettle, pressure cooker, food processor, razor, hair dryer, blender, vacuum cleaner, coffee maker, iron, ironing board, toaster, bathroom scale

Electronic devices: Computer, TV, monitor, tablet, radio, audio player, electronic toy, UPS power system, charger

Transformed wood: Painted, treated, reusable or from pallets, furniture

Natural wood: Branches, logs, pruning residues and trunks

Miscellaneous: Coolers, books

Construction, renovation or demolition materials: Windows, mirror, planks, asphalt shingles, gypsum, chipboard or aluminum siding, insulation board, wood fiber board, wood chip board, door, patio door, wood treated, plywood, ceramic and tile, wooden pallet

Granular materials: Asphalt, stone, brick, concrete, rock, sand and uncontaminated earth

Recyclable materials accepted in the blue bin: Paper, cardboard, glass, plastic, metal containers

Textile materials: Clothing, rags, sheets, towels, eiderdowns, quilts, fabric curtains, fabrics, fabric tablecloths

Metal objects: Steel and cast iron bathtub, metal shelf, filing cabinet, metal chair, water heater, steel sink, straps, iron, aluminum, empty paint containers, air exchanger

Gardening and soil maintenance tools: Lawn mower, leaf blower, snow blower, chainsaw, small engine

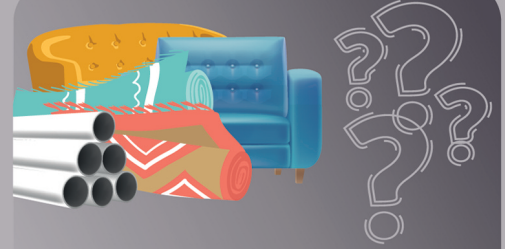
Electrical tools and accessories for construction: Drill, saw, table saw, generator, sander, pump, ladder and stepladder, grinder, etc.

Tires: Car tires with or without rims, light truck tires, bicycle tires without rims

Garden or raking waste: Dead leaves, plants, peat, grass and small branches

Household hazardous waste (HHW): Aerosol, light bulbs, paint stripper, paint, oil, solvent, tar, pesticides, batteries, propane, vehicle batteries, etc.

Styrofoam: Insulation, packaging or food



Large ultimate waste pick-up August 26, 2021

LARGE ULTIMATE WASTE ITEMS:

- ▶ Sofas and armchairs
- ▶ Storm drains
- ▶ Fiberglass and acrylic (showers, canoes, etc.)
- ▶ Child car seats
- ▶ Carpets, linoleum and underlay
- ▶ Tarpaulin
- ▶ Pool liner
- ▶ ABS pipe
- ▶ Vinyl

In length of 4 feet and less

WHAT TO DO WITH METAL OBJECTS?



Metal pick-up from August 19 to 26

Please put the metal objects by the side of the road from August 19.

Examples: Steel and cast iron bathtub, metal shelf, file cabinet, metal chair, water heater, steel sink, refrigerator, stove, fence, BBQ, etc.



Need help figuring out which materials goes in which bin? ▶ [abcdesbacs.com](https://www.abcdesbacs.com)

MISCELLANEOUS

ME, A NOISY NEIGHBOR?

Did you know? It is forbidden to cause noise when carrying out, between 9 p.m. and 7 a.m., work, using a mower, a chainsaw, or any other motorized gardening instrument.

Beyond the rules, we should all strive to be a good neighbor!

NOISE ON LAKE MASSAWIPPI

Noise pollution is one of the major concerns on the lake and its surroundings. Noise does not contribute anything useful to navigation and must be reduced to the minimum justified by the propulsion. Please pay attention to this as well as the time of day for such activities!

PROVINCIAL RAGWEED REMOVAL CAMPAIGN



Ragweed is a perennial and invasive plant that is gaining ground each year and making life difficult for nearly a million Quebecers during the summer season.

How can I help?

Uproot this plant before its pollination period which begins at the end of July.

For more information :

<https://poumonquebec.ca/en/evenement/ragweed-uprooting-campaign/>

NEW STANDARDS FOR SWIMMING POOLS

The provincial Residential Swimming Pool Safety Regulations have been amended.

New standards and provisions will apply to any existing swimming pool, regardless of its date of installation. In certain situations, this by-law provides a period for homeowners to bring their installation into compliance.

The regulations are available on the Internet:

mamh.gouv.qc.ca/ministere/securite-des-piscines-residentielles/mesures-de-securite/

FIRE SAFETY

OPEN FIRES

Open fire permit (issuance deadline up to 7 days)

Open-air fire permits are now issued by the *Régie de prévention et de protection incendie Memphrémagog Est*. 819-838-5877 ext 202

Online form: www.regieincendieest.ca

FIRES IN A FIREPLACE

Outdoor fires contained in an outdoor fireplace equipped with a spark arrester cover and resting on a stone bottom is authorized at all times without a permit. It is the responsibility of the person lighting the fire that the smoke does not bother the neighbors.

JOB OFFER

PUBLIC WORKS EMPLOYEE-OPERATOR

Living the Eastern Townships

Surrounding the village of North Hatley and bordering the southern limit of Sherbrooke, the Canton of Hatley is a dynamic municipality whose growth is constant, but in harmony with the environment. A rural suburb, agricultural and forest territory, the municipality is also a haven known for its beauty and its natural attractions.

A future of possibilities

The municipality of Canton de Hatley is dynamic and forward-looking. It offers its employees a range of benefits, a competitive salary and an environment that promotes skills development and versatility. Its public works team offers its citizens an all-season public infrastructure maintenance service. It is also characterized by concern for health, safety and a motivating and dynamic work environment.

Brief description of the position

Under the supervision of the public works manager, the employee performs various maintenance tasks for municipal infrastructure. He drives and operates public works vehicles.

Main responsibilities of the position

- Perform various work related to the maintenance and repair of road infrastructure;
- Drive and operate a 10 wheel truck and loader;
- Carry out leveling work;
- Maintain equipment and vehicles;
- Carry out repairs on the water supply network from time to time;
- Participate in various manual work on municipal infrastructure.

Qualifications sought

- Be able to work in a team and interact with the public;
- Have a Secondary 5 or equivalent;
- Have knowledge of mechanics and be able to do general maintenance on vehicles;
- Possess a Class 3 driving license;
- Being able to operate a grader is an asset;
- Having snow removal experience is an asset.

Advantageous working conditions

- Salary according to experience and the salary scale in force
- Benefits
- Permanent full-time position (April to November) 37.5 hours over 4 days a week
- Possibility of snow removal from December to March - to be discussed

Interested persons must send their curriculum vitae by 10 a.m., June 23, 2021, by email to Ms. Kyanne Ste-Marie, Executive Director: info@cantondehatley.ca

Only those selected for the interview will be contacted.