



Municipal Newsletter

Le Babillard

Municipal Information Newsletter • Volume 10, number 02 • Summer 2022

CANTON DE HATLEY

STAY INFORMED

To stay informed on the latest news from the municipality, please subscribe to the newsletter from the home page of our website.



Photo credit: Nancy Beattie

www.cantondehatley.ca

| | |
|---|--------------------------------|
| 2 | Word from the Mayor |
| 3 | Financial statements |
| 4 | Community |
| 5 | Highlights of Council Meetings |
| 7 | Environment |

MEMBERS OF THE MUNICIPAL COUNCIL



COUNCILLOR 1

Patrick
Clowery



COUNCILLOR 2

Jacques
Lambert



COUNCILLOR 3

Jacques
Bogenez



COUNCILLOR 4

Maryse
Gaudreau



COUNCILLOR 5

Danielle
Côté



COUNCILLOR 6

Sylvie
Cassar

MUNICIPALITÉ DU CANTON DE HATLEY
4765 chemin de Capelton
Canton-de-Hatley (Québec) J0B 2C0
Tel.: 819 842-2977
Fax: 819 842-1997
Email: info@cantondehatley.ca

Graphic design and printing:
Les Publications Municipales Inc.
1 877-553-1955

WORD FROM THE MAYOR

Dear citizens,

June, Water Month

Did you know that in 2017, the Government of Quebec proclaimed the month of June "Water Month" with the aim of raising awareness and educating the population of Quebec on water and its issues? The 2022 edition of Water Month is dedicated to lakes. It is by chance that locally the Lake Massawippi file occupies the foreground this year, since the discovery of the presence of zebra mussels last year.

The control measures at the accesses and launches of Lake Massawippi have been tightened this year and the controls by the nautical patrol will be more consistent. These changes are at the request of the lakeside municipalities grouped under the Régie du Parc régional Massawippi. The goal is to protect the lake from invasive species, including the zebra mussel.

Still related to water, regional county municipalities (MRCs) must implement a regional plan for wetlands and bodies of water. The objective is to integrate the conservation of wetlands and bodies of water into their land use planning, which directly affects municipalities.

All these changes affect our ways of doing things and sometimes impose new limits on us, but they go in the same direction, that of protecting the resource that is water. Your cooperation and solidarity in these matters are appreciated!

Road conditions

This spring has been particularly difficult for municipal roads and we thank you for your understanding. The road thaw period limits the possible interventions, but we have now taken control of the situation and are proud of the state of our country roads.

Open fires

To avoid waiting for an authorization to burn in the open air, I recommend that each of my fellow citizens have a fireplace equipped with a spark arrester cover and resting on a stone base. This type of fire does not require a permit and it is safer!

Ecocentres

As residents of the Canton de Hatley, you have access to the ecocentres of the city of Sherbrooke. It is an exceptional service that accepts a wide variety of materials.

Don't hesitate to use the service! (Proof of residence may be required)

A growing beauty

Since my arrival in the Canton of Hatley in 1996, our Municipality has become more and more beautiful. It is true that beauty is in the eye of the beholder, but it seems true to me. The credit goes to each of you. The care you take of your property shows our environment and its natural assets at their best. And it is in the summer that we can fully admire it.

In a country where the cold is almost a constant, summer is precious. This is the perfect time to be outdoors. As summer goes by too fast, you have to know how to fully savor the season. I therefore invite you to rediscover our common gems such as the Massawippi River, Lake Massawippi, the walking trails and the bike path linking North Hatley to Sherbrooke.

I wish you lots of sunshine and joy!

Vincent Fontaine, mayor





MARCHÉ CHAMPÊTRE
- 1976 -

NORTH HATLEY FARMERS MARKET

Every Saturday – 10 am to 12 pm
From June 18 to October 15, 2022

At River Park (accessible by Capelton Road in the Village of North Hatley).

Come discover and support nearly thirty local merchants and producers in a festive atmosphere!

NO WIPPI IN 2022

The Wippi shuttle, allowing cyclists and pedestrians to cross Lake Massawippi between North Hatley and Ayer's Cliff, will not be in operation in 2022.

CROQUE-LIVRES

Open to young and old alike, our book box is waiting for you! This book sharing box is located near the main entrance of the Town Hall. Don't hesitate to come and exchange books at will. Happy reading!

croquelivres.ca

COMMUNITY HELP

- Meals on Wheels (Monday and Wednesday)
- Blood pressure clinic
- Foot care clinic
- Friendly visits
- Community meals
- Social events
- Shopping
- Support for caregivers

For more information, contact Community Aid at 819 821-4779 or Judy Bean at 819 842-2995.

CINEMA UNDER THE STARS

July 8 – The Adams Family 2
August 5 – Dumbo

Free outdoor screening, starting at dusk, at City Hall. Bring a blanket, bug spray and lawn chairs. Bring your snacks and drinks.

Everyone is welcome!



It's all of
Quebec that's
accelerating



ACCESS TO HIGH SPEED INTERNET

An interactive map has recently been put online by the Quebec government in order to know the progress of the connection work and to visualize if your residence will be served by the High speed Internet access program in Quebec. Here is the link: quebec.ca/gouvernement/politiques-orientations/internet-haute-vitesse-etat-situation.

If your residence is not included in the program, we ask you to inform the government by email at: carte.interactive@mce.gouv.qc.ca.



Municipalité
amie des aînés

Canton de Hatley, as a senior friendly Municipality (MADA - Municipalité amie des aînés), held workshops for our seniors and caregivers in April and May. We also invited the seniors from North Hatley to join us for these highly successful activities that were really enjoyed by the participants.

- The *Jog Your Mind* workshop lasted eight weeks and participants received tips and advice to keep their brains active and preserve their intellectual vitality.
- The *Technology Support* workshop lasted five weeks and was intended to support seniors in the use of technology, namely smart phones, tablets and laptops.

The participants were divided according to their competencies with new technologies.

Both workshops were a real success, and we would like to especially thank Mrs. Sylvie Fowlis of Lennoxville Community Aid for her precious collaboration in helping us to get started.

We would also like to thank the presenters for *Jog Your Mind*, Stephanie Cramp and Line Tremblay and for the technical support: Samuel Kroft, Louis Ouellette and Rachelle Thompson.

The Municipality will continue to offer different workshops this coming fall for our seniors. We welcome ideas and suggestions.

For Council,

Patrick Clowery

President of the Canton de Hatley MADA Committee

SUMMER 2022

COUNCIL MEETING OF APRIL 5, 2022

Quebec elected officials in solidarity with the Ukrainian people

In collaboration with the Quebec Federation of Municipalities, Council adopts a resolution of solidarity with the Ukrainian people.

Hiring of the assistant environmental inspector

The council confirms the appointment of Frédéric Hébert as assistant to the environmental inspector for the summer of 2022.

Appointment of the nautical patrol

The Lake Massawippi nautical patrollers, Mélodie Dugrenier, Paige Lavoie, Anthony Jolin, Orland Trujillo, Maxime Champoux and Arnaud Fontaine, have been appointed municipal inspectors for the purposes of enforcement for the 2022 season.

Albert-Mines development project – phase I agreement authorization

Council authorizes the signing of an agreement governing the road construction work with the Faubourg des Cantons, a development project off Albert-Mines road at the corner of Bel-Horizon road.

Massawippi vocal ensemble – 2022 contribution

Council authorizes a contribution of \$2,500 to support the activities of the Ensemble vocal Massawippi choir in 2022.

COUNCIL MEETING OF MAY 3, 2022

Works on slopes

The municipality submits the issuance of various permits and certificates to the by-law on PIIA (site planning and architectural integration plans) and to evaluation criteria, when the work in question is located on slopes of 15% to 30% on the whole territory.

Permits for circulation aisles, access roads and embankments

The municipality requires a certificate for the development of all circulation aisles or access roads, in order to check in advance their location and their

development on land, when these developments are located on slopes of 15% to 30%.

The municipality also requires a certificate for backfilling and excavation work with an area of more than 100 m², when these are done on slopes of 15% to 30%.

Memphremagog East Fire Department

Council approves By-law 2022-02 of the Régie intermunicipale de prévention et de protection incendie Memphremagog Est relating to the purchase of breathing apparatus, firefighting gear and the installation of a communication tower. The share of the Municipality of the Canton of Hatley is 13.60% or \$20,400 out of \$150,000.

Appointment of members of the environmental advisory committee

Council appoints the following people to the committee: Danielle Côté, Sylvie Cassar, Marie Dorais, Dominique Grenier, Gilles Forget and Hilda Ashikian. Nominations are until December 31, 2023.

Lake Massawippi Conservation Club

The Municipality is contributing \$850 to the Lake Massawippi Conservation Club to support its activities in 2022.

Pedestrian bridge project

Council does not accept any of the tenders received in the pedestrian bridge project over the Massawippi River. This means that the project is shelved for the time being.

Tour du Courage PROCURE

The Municipality supports participation in this cause with appropriate temporary signage on Dunant Road. It also authorizes, for the duration of the participation, the installation of the participant's RV on municipal land located at the eastern intersection of Dunant Road and Capelton Road. The Tour du Courage is a cycling event in support of PROCURE, a charity in the fight against prostate cancer.



Outdoor fire permit

The municipalities members of the Memphrémagog Est fire prevention and protection board, including the Canton of Hatley, have chosen to centralize and standardize the management of outdoor fires.



Outdoor fireplace with screen

 **AUTHORIZED**

AT ALL TIMES WITHOUT A LICENSE

Outdoor fires contained in an outdoor fireplace fitted with a screen cover and resting on a stone base is authorized at all times. It is the responsibility of the person lighting the fire that the smoke does not bother the neighbors.



Open fire

 **AUTHORIZED**

WITH PERMIT

LOW OR MODERATE INDEX

 **PROHIBITED**

HIGH, VERY HIGH OR EXTREME INDEX

HAVE YOU HEARD OF THE FIRE HAZARD INDEX?

Every day and for each region, starting in the spring, the Society for the Protection of Forests Against Fire (SOPFEU) issues a fire danger index. We invite you to consult the sopfeu.qc.ca website before lighting an open fire.



TO OBTAIN AN OPEN AIR FIRE PERMIT (NO COST)

By phone

Régie incendie Memphrémagog Est
819 838-5877 ext. 202

By internet form

Open air fire form:
regieincendieest.ca/feux-agrave-ciel-ouverts



Questions?

Régie incendie Memphrémagog Est
2100, route 143, Hatley QC J0B 4B0
819 838-5877 ext. 202
prevention@regieincendieest.com
regieincendieest.ca

It goes to the ecocentre!

**DID
YOU
KNOW**



Objects and materials that are not large ultimate waste are accepted free of charge at the Sherbrooke ecocentres.

Free access for Canton de Hatley residents with proof of residence.

MATERIALS ACCEPTED AT SHERBROOKE ECOCENTRES THAT ARE NOT LARGE ULTIMATE WASTE:

Furnishing: Mattresses, wooden furniture

Sporting goods: Bicycles, tricycle, children's bike, scooter, golf clubs, skis

Appliances: Refrigerator, freezer, oven, microwave oven, air conditioner, washer, dishwasher, dryer, stove, fountain, cooler and water dispenser

Small appliances: Barbecue, kettle, pressure cooker, food processor, razor, hair dryer, blender, vacuum cleaner, coffee maker, iron, ironing board, toaster, bathroom scale

Electronic devices: Computer, TV, monitor, tablet, radio, audio player, electronic toy, UPS power system, charger

Transformed wood: Painted, treated, reusable or from pallets, furniture

Natural wood: Branches, logs, pruning residues and trunks

Miscellaneous: Coolers, books

Construction, renovation or demolition materials: Windows, mirror, planks, asphalt shingles, gypsum, chipboard or aluminum siding, insulation board, wood fiber board, wood chip board, door, patio door, wood treated, plywood, ceramic and tile, wooden pallet

Granular materials: Asphalt, stone, brick, concrete, rock, sand and uncontaminated earth

Recyclable materials accepted in the blue bin: Paper, cardboard, glass, plastic, metal containers

Textile materials: Clothing, rags, sheets, towels, eiderdowns, quilts, fabric curtains, fabrics, fabric tablecloths

Metal objects: Steel and cast iron bathtub, metal shelf, filing cabinet, metal chair, water heater, steel sink, straps, iron, aluminum, empty paint containers, air exchanger

Gardening and soil maintenance tools: Lawn mower, leaf blower, snow blower, chainsaw, small engine

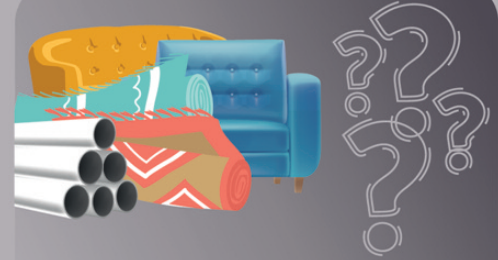
Electrical tools and accessories for construction: Drill, saw, table saw, generator, sander, pump, ladder and stepladder, grinder, etc.

Tires: Car tires with or without rims, light truck tires, bicycle tires without rims

Garden or raking waste: Dead leaves, plants, peat, grass and small branches

Household hazardous waste (HHW): Aerosol, light bulbs, paint stripper, paint, oil, solvent, tar, pesticides, batteries, propane, vehicle batteries, etc.

Styrofoam: Insulation, packaging or food



Large ultimate waste pick-up August 25, 2022

LARGE ULTIMATE WASTE ITEMS:

- ▶ Sofas and armchairs
- ▶ Storm drains
- ▶ Fiberglass and acrylic (showers, canoes, etc.)
- ▶ Child car seats
- ▶ Carpets, linoleum and underlay
- ▶ Tarpaulin
- ▶ Pool liner
- ▶ ABS pipe
- ▶ Vinyl

In length of 4 feet and less

WHAT TO DO WITH METAL OBJECTS?



Metal pick-up from August 18 to 24

Please put the metal objects by the side of the road from August 18.

Examples: Steel and cast iron bathtub, metal shelf, file cabinet, metal chair, water heater, steel sink, refrigerator, stove, fence, BBQ, etc.



LET'S UPROOT TOGETHER

Ragweed is a perennial and invasive plant that is gaining ground each year and making life difficult for nearly a million Quebecers during the summer season.

All Summer long!

How can I help? Uproot this plant before its pollination period which begins at the end of July.

For more information :
poumonquebec.ca/en/evenement/ragweed-uprooting-campaign

PUBLIC SAFETY

New standards for swimming pools

The provincial Residential Swimming Pool Safety Regulations have been amended.



New standards and provisions will apply to any existing swimming pool, regardless of its date of installation. In certain situations, this by-law provides a period for homeowners to bring their installation into compliance.

The regulations are available on the Internet:

mamh.gouv.qc.ca/ministere/securite-des-piscines-residentielles/mesures-de-securite

TOPONYMIC HERITAGE OF THE TOWNSHIP OF HATLEY

MONTÉE LAPOINTE AND ALFRED-LAPOINTE STREET: A FARMER WHO LIVED IN A CENTURY OLD HOUSE

The coming of the Lapointe family to Canton de Hatley is closely related to a house with a history of more than 175 years.

Alfred Lapointe was born at Saint-Georges, in the Beauce region, on July 14, 1895. He was the son of Marie Gagnon (1857-1929) and of Joseph Audet Lapointe (1856-1935). They had been married in Saint-Georges in 1881. Alfred married Augustine Carette (1897-1981) in 1916 in Sainte-Marie, also in the Beauce region. Between 1919 and 1938, they had seven children, now all deceased: Rollande, Roger, Jeanne d'Arc, Marcel, Jacques, Huguette and Yvan. Alfred Lapointe was at first a carpenter in Saint-Benoît-Labre, then a garage owner in Montreal and later, a day laborer in Martinville. He settled in Canton de Hatley in 1937. In 1938, he bought the farm of Annie Sherry, the widow of Wyatt Woodrow, located on lots 599 and 600, south of present-day Alfred-Lapointe Street.



Alfred Lapointe
(courtesy of Jacques Lapointe, Magog)

The history of the house on the farm began around 1844 when it was purchased by Obidiah Mawse from William Bowman Felton who, in fact, had first built a log home that was incorporated in the 1950s into a larger house, that is still standing at number 2, montée Lapointe. It is one of the oldest houses in Canton de Hatley. Prior to the Lapointe family, the house had been owned by a succession of families, including: Felton, Abel R. Johnson, Peter Colt (Pierre Poulin Jr.), Squire Colby in 1874, Jackson Gordon, Peter Colt once again, Thomas Kay in 1882, Marvel Kay in 1901, Tom Kay in 1905 and Wyatt J. Woodrow in 1920.

The Lapointe family did not live on Lapointe Road for many years. Alfred Lapointe retired around 1955 and moved to Chapais in northern Quebec with his wife and son Jacques. He died there on January 4, 1957, however his remains are buried in North Hatley's Sainte-Elisabeth Cemetery, where his wife would also be buried. In 1958, she had sold the Canton de Hatley farm to Jacques Codère, who completely renovated the house

and subdivided the property. Where the house stands, the land is now reduced to 27 acres.

The road leading to the Lapointe farm was likely called Lapointe as early as the end of the 1930s, as it was then the custom. But since the oldest farmhouse on Lapointe Road had been built by Obidiah Hawse shortly after 1844, the access road to it necessarily dates from that time.

Following this, the property at no. 2, montée Lapointe was sold in 1973 to Earl Stanley Smith, the breeder of purebred Clydesdale drag horses, and later to his widow Edna Lillian Smith in 1979, to notary Luc Lamoureux in 1979 as well as to the lawyer John Peter Weldon and his wife Patricia Godbout in 1983. Finally, John Peter Weldon has since been the sole owner beginning in 1990. There is a record that several children of the Lapointe family visited the property in the 1980s.

Lapointe Road would have been opened between 1933 and 1935 with the northern part located in Rock Forest and the southern section, in Canton de Hatley. The place name was made official in 1980 by the Commission de toponymie du Québec: in Rock Forest under the wording Lapointe Road and, in 1986, also under the same wording, for a length of about 200 meters in Canton de Hatley. As there was a street elsewhere in Sherbrooke called de la Pointe and because of the montée Lapointe in Canton de Hatley, so as to make sure there would be no confusion, the name Alfred-Lapointe Street was given in 2005 by Sherbrooke City Council, instead of Lapointe Road. This place name was made official by the Commission de toponymie du Québec on May 15, 2006. In Canton de Hatley, the name Alfred-Lapointe was already in use, however, Canton de Hatley Town Council asked the Commission de toponymie du Québec in 2021 to make it the official in the Township. This was finally done on December 9, 2021.

Gérard Coté (Lennoxville-Ascot Historical and Museum Society) and Jean-Marie Dubois (Université de Sherbrooke)



The home in 1989
(Conner, Reginald (1989) *The Vine and the Branches: History of Minton, Quebec*. Lennoxville, p. 107)



The present home
(courtesy of John Peter Weldon)