



Municipal Newsletter

# Le Babillard

Municipal Information Newsletter • Volume 10, number 03 • Fall 2022

CANTON DE HATLEY

## New process to supervise work on slopes

(SEE PAGE 5)

[cantondehatley.ca](http://cantondehatley.ca)

|   |                                |
|---|--------------------------------|
| 2 | Word from the Mayor            |
| 3 | Highlights of Council Meetings |
| 4 | Environment                    |
| 6 | Recreation                     |
| 6 | Community                      |

Photo credit: Patrick Clowery



## MEMBERS OF THE MUNICIPAL COUNCIL



**COUNCILLOR 1**

**Patrick  
Clowery**



**COUNCILLOR 2**

**Jacques  
Lambert**



**COUNCILLOR 3**

**Jacques  
Bogenez**



**COUNCILLOR 4**

**Maryse  
Gaudreau**



**COUNCILLOR 5**

**Danielle  
Côté**



**COUNCILLOR 6**

**Sylvie  
Cassar**

**MUNICIPALITÉ DU CANTON DE HATLEY**  
4765 chemin de Capelton  
Canton-de-Hatley (Québec) J0B 2C0  
Tel.: 819 842-2977  
Fax: 819 842-1997  
Email: [info@cantondehatley.ca](mailto:info@cantondehatley.ca)

Graphic design and printing:  
Les Publications Municipales Inc.  
1 877-553-1955

## WORD FROM THE MAYOR

### Climate and local roads

As you surely know, the maintenance of the road network makes up the largest portion of the municipal budget. The road network is particularly sensitive to weather conditions and these are impacted by climate change that affects us all. The topography of the territory can increase the effect, for example erosion by runoff during heavy rainfall. Those who study the effects of climate on roads reflect the following impacts, among others:

- More intense precipitation amplifies surface water runoff. These same precipitations increase the water saturation levels of the roadway, contributing to episodes of localized erosion.
- The damage caused by the effects of freezing and thawing during the winter is amplified by the accumulated frequency of these episodes.
- Freeze and thaw episodes, combined with more humid winters, require greater use of de-icing salts. Although necessary, these salts contribute to the foreseeable deterioration of road surfaces.
- Episodes of intense heat lead to increased damage by deformation of asphalt paved roads.

In the Canton de Hatley, we have already been affected by most of the impacts mentioned above.

### Two-speed inflation

Our humid winters demand more de-icing salts and this product is a good example of two-speed inflation. While the price of certain products is experiencing so-called normal inflation, the price of de-icing salts has increased by more than 20% since last year. The same is true for other products that particularly affect the municipal world, such as asphalt, concrete and fuel.

### Thank you Pierre-Luc

Our public works coordinator, Pierre-Luc Bernier, left his position for a new opportunity. We would like to highlight his great work over the years with the Municipality as well as his constant concern to offer quality service to citizens. Thank you, Pierre-Luc, and good luck in your projects! Fortunately, we have a solid and experienced team in place and we salute their continued quality work.

### Bilingual status of the Municipality

Faced with the adoption of Bill 96 by the government, the Municipality informed the Office de la langue française that it is maintaining its bilingual status. Council adopted a resolution to this effect in June. This status allows the Municipality, among other things, to communicate in a language other than French. In Canton de Hatley, bilingual status allows for an English version of the main communication tools (website, newsletter, etc.).

### Our environment, a priority

We live in an exceptional place and want to keep it this way. It is with this in mind that the Municipality has created a new position of environmental and urban planning inspector. The new employee will begin shortly and will work alongside the current building and environment inspector, Éric Gravel. His priority area of intervention will be environmental issues.

### People who care

The municipal world is one of process, communication and collaboration. It is therefore a privilege for me to work alongside a team made up of people who care, whether at Council meetings or with municipal employees. It makes our work truly enjoyable.

### Stay informed

For those of you who have not already done so, I invite you to subscribe to the municipal newsletter, available via the home page of the [cantondehatley.ca](http://cantondehatley.ca) website. This allows you to be informed of municipal news in a timely manner.

I wish you a bright beautiful autumn!

**Vincent Fontaine, mayor**

### Sources :

*Impact des changements climatiques sur les chaussées des réseaux routiers québécois, Département de génie civil et de génie des eaux, Université Laval, juin 2014*

<https://umq.qc.ca/publication/elections-quebec-2022-linflation-occasionne-des-couts-supplementaires-de-1-milliard-de-dollars-pour-les-municipalites-souligne-umq/>



FALL 2022

## COUNCIL MEETING OF JUNE 7, 2022

### Ethics Act

The director general submits the list of elected officials who participated in the training on ethics and professional conduct in municipal matters.

### Travelling expenses

Council adopted an updated Travel and Hospitality Expenses Policy, given the context of rising fuel prices and inflation.

### North Hatley Recreation Agreement

The Municipality reimburses \$8,045 to North Hatley under the recreation agreement, contributing in particular to the operations of the North Hatley beach.

### North Hatley Library

The Municipality donates \$500 to the North Hatley library.

### Meals on Wheels

The Municipality donates \$500 to Lennoxville Community Aid and Meals on Wheels.

### Bilingual status

Council adopts a resolution advising the Office de la langue française of the maintenance of the bilingual status of the Municipality of Canton de Hatley.

## COUNCIL MEETING OF JULY 5, 2022

### Tank pumper truck

Council approves a loan by-law of \$790,000 from the Régie incendie Memphrémagog Est for the acquisition of a pumper-tank truck. The Canton de Hatley's contribution is 13.60%, or \$107,440. Nine (9) other municipalities are members of the Régie.

### Red Cross Agreement

Council approves the renewal of the disaster services agreement with the Red Cross. The municipal contribution is \$0.18 per resident per year.

### Markers for cycle lanes

The Municipality acquires 70 markers for bicycle paths. They will be used for the multipurpose lane on Belvédère sud street and the pedestrian lane on Hatley Centre road.

### Relais Desjardins du Lac

The 16<sup>th</sup> edition of the Relais Desjardins du Lac Memphrémagog, a team relay running race over a distance of 103 km, takes place on September 17 and passes through the public roads of the Canton de Hatley including Lac, Hatley Acres and Hatley Center roads.

### Eurasian watermilfoil

Council proposes to the Régie du Parc régional Massawippi to take charge of the planning and coordination of the next joint municipal actions to fight against the Eurasian watermilfoil.

## COUNCIL MEETING OF AUGUST 2, 2022

### Management of the Massawippi River Dam

The Municipality takes over from North Hatley for the technical management of the dam. Accountability for the management of the dam remains with the Régie du Parc régional Massawippi, accompanied by the ministries concerned.

### Fire permits and other applications

Council proposes to the Régie incendie Memphrémagog Est a dedicated line for the fire services and to have a follow-up process in the context of permit applications or any other request of an administrative nature.

## COUNCIL MEETING OF SEPTEMBER 6, 2022

### Faubourg des Cantons phase 2

Council authorizes the signing of an agreement for the completion of phase 2 of the Faubourg des Cantons project. The project is accessible via Albert Mines road near Bel-Horizon road. Phase 1 was for the main street (Victoria) and phase 2 is for a secondary street (Mégane).

### Hiring new employees

The Municipality hires three new employees. Vincent Maurice-Kiepora is hired as an environmental and urban planning inspector. He will act alongside the long-time inspector, Mr. Éric Gravel.

Jason Harris is hired as a mechanic and trucker and Pascal Bernier is hired as a trucker and journeyman.

# ENVIRONMENT

## FINANCIAL ASSISTANCE POLICY TO PROMOTE THE USE OF VARIOUS REUSABLE HYGIENIC PRODUCTS

A 50% refund, up to \$200 per year per resident, is offered to citizens on the purchase of certain washable and reusable hygiene products. Details and forms on the web site:

[cantondehatley.ca/en/waste-management/reusable-hygiene-products/](http://cantondehatley.ca/en/waste-management/reusable-hygiene-products/)

## NEW LIFE FOR DEAD LEAVES

The dry dead leaves picked up in the fall can be kept and used to line the bottom of the brown bin throughout the winter to prevent materials from sticking to the bottom of the bin. You can also use cardboard or newspaper for this purpose.

## AT TOWN HALL

You can drop off the following items for recycling:

- Batteries (batteries)
- Printer ink cartridges
- Cork stoppers
- Glass bottles and containers (remove lids and caps please)

## SHERBROOKE ECOCENTRES

- Free access for residents of Canton de Hatley (proof of residence required)
- Wide range of accepted and valued materials
- Info: 819 821-5858 or consult the Waste management section of the municipal website



**RABIES is DEADLY!**

## Raccoon Rabies: Report Suspect Animals!

You can help monitor for raccoon rabies by reporting any raccoon, skunk or fox that is found dead or that appears sick, paralyzed, disoriented or unusually aggressive.

Rabies is an incurable and fatal disease that can be transmitted from an infected animal to humans. Surveillance of this disease is therefore essential to prevent its spread in Quebec.

To report suspicious animals in any season, call 1 877 346-6763, Monday to Friday from 8:30 a.m. to 4:30 p.m. or anytime at: [quebec.ca/raccoonrabies](http://quebec.ca/raccoonrabies).

## WHAT GOES IN THE BROWN BIN?

3 simple rules:

### 1- It can be eaten?

Cooked, raw or expired foods, bread, fruits and vegetables, meats including bones, etc.

### 2- Is it a garden residue?

Herbs, leaves, plants, small branches, sawdust, natural wood chips, etc.

### 3- Is it paper or cardboard?

Paper towels, tissues, pizza box, shredded paper, cardboard plates, etc.



**DID YOU KNOW?**

Compostable plastic bags interfere with air circulation and do not degrade along with the composting process.



Paper bags are accepted



Compostable bags are NOT accepted



Need help figuring out which materials goes to which bin? ► [abcdesbags.com](http://abcdesbags.com)

## WINTER PICK-UP CALENDAR (NOVEMBER TO MARCH)

- Black bin pick-up once a month
- Blue bin pick-up every two weeks
- Brown bin pick-up every two weeks

**Reminder:** no black bin pick-up on November 3





## NEW PROCESS TO SUPERVISE WORK ON SLOPES

You have a project, but your land includes steep slopes? This project may be subject to a new municipal approval process and the issuance of a permit or certificate of authorization.

- Sectors targeted: the entire territory.
- Target land: any land or part of land with slopes of 15% or more.
- Attention! Work affected includes backfilling and excavation.

Most work located on slopes of 15% to 30%, throughout the territory, will now require municipal authorization. It should be noted that on very steep slopes (more than 30%), most work is prohibited. This new municipal by-law stems, among other things, from the regional orientations adopted by the MRC de Memphrémagog.

### The works on a slope of 15% to 30% targeted are:

- Construction of a new main building;
- Construction of a new accessory building of more than 25 m<sup>2</sup> (270 sq. ft.) on the ground or on a continuous foundation;
- Expansion of a building or structure resulting in an increase in the footprint of the building or structure concerned;
- Reconstruction of a building protected by acquired rights in accordance with the municipal regulations in force;
- Establishment of a road, access roads and circulation alleys;
- Work required for the installation of an inground pool;
- Backfill and excavation work over an area of more than 100 m<sup>2</sup> (1076.4 ft<sup>2</sup>)

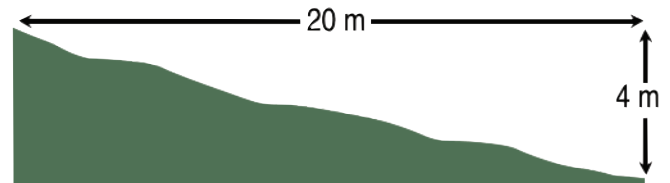
The objectives are to ensure that certain works planned in areas with steep slopes (slope greater than or equal to 15% and less than 30%) blend in as well as possible with the natural environment, limiting interventions as much as possible on these steep slopes or by adapting them to the environment.

The work approval process is governed by by-law 2022-07 amending by-law 2000-13 on site planning and architectural integration. This means that a request for a certificate of authorization will have to be studied by the Comité consultatif en urbanisme, which will make its recommendations to the Council. You must therefore allow a minimum of 2 months to obtain the required authorization.

**You want to know more? Here are two links:**

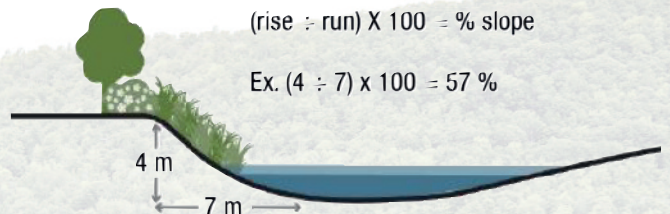
[cantondehatley.ca/wp-content/uploads/2022/04/2022-07-PIIA.pdf](http://cantondehatley.ca/wp-content/uploads/2022/04/2022-07-PIIA.pdf)

[www.lerefletdulac.com/actualites/ce-sera-de-plus-en-plus-difficile-de-construire-dans-la-mrc-de-memphremagog/](http://www.lerefletdulac.com/actualites/ce-sera-de-plus-en-plus-difficile-de-construire-dans-la-mrc-de-memphremagog/)



### Slope calculation

Have the slope calculated by a qualified professional or technologist.



**Example of an average slope of 20%, considered as a steep slope (15% to less than 30%) in the regulations.**

Certain works and structures are subject to discretionary regulations.

# RECREATION

## YOUTH FINANCIAL ASSISTANCE POLICY - SPORTING, CULTURAL AND SCIENTIFIC ELITE

- Young people aged 17 and under may be eligible for a scholarship under the *Politique d'aide financière à la jeunesse - Élite sportive, culturelle et scientifique*.
- The policy makes it possible to recognize the participation of a young person in an event or a competition which makes him or her a candidate who excels in a recognized discipline.
- Details on the website [cantondehatley.ca](http://cantondehatley.ca) Recreation section.

## LIBRARY

### Subscription Refund

Library membership is eligible for a 100% refund under the Recreation Policy for ages 17 and under. In addition, the municipality agrees to reimburse 50% of an adult's library subscription, not to exceed \$100 per household.

# COMMUNITY



At the Town Hall we have a display with different local products. This showcase, much appreciated by visitors, allows tourists and residents to discover the merchants and artisans of the Canton of Hatley.

Local businesses interested in exhibiting a product can drop them off at reception during our opening hours.

## PHOTO SEARCH FOR THE 2023 CALENDAR

We are always looking for the most beautiful photos of the Canton for the production of our next annual calendar. Do you have a magnificent view or a little corner of paradise for us to discover in the Canton of Hatley? Do not hesitate to send us your photos of the 4 seasons at [reception@cantondehatley.ca](mailto:reception@cantondehatley.ca). Your participation is greatly appreciated!

## RÉGIE INCENDIE MEMPHRÉMAGOG EST

The Régie incendie Memphrémagog Est has a new line dedicated to fire prevention, especially for burning permits.

You can now reach the fire department at this number: **819 838-5877 ext. 209**

## RECREATION POLICY

### Refund of Surcharge

- The municipality now reimburses 100% of the surtax paid when registering for recreational activities, up to \$150 per child (17 years and under) annually.
- All recreation and sports activities are eligible, except for activities already offered by Canton de Hatley.
- All reimbursement requests must reach the municipality before December 31<sup>st</sup>.
- Details on the website [cantondehatley.ca](http://cantondehatley.ca) Recreation section.

## 2022 DAY CAMP

### Refund Policy

The municipality reimburses its residents \$30 per child per week for any registration for the 2022 Canton de Hatley day camp. Reimbursement is made by cheque issued in September. Required documents: official receipt and proof of residence. You have until December 31<sup>st</sup> to send us your request.

## AED IN THE HATLEY ACRES SECTOR

The Municipality wishes to highlight the private initiative of doctors Michel Clairoux and Donna Cherniak for the installation of an AED (automated external defibrillator). They thus contribute to the safety of the residents of their neighborhood. This AED will be installed outside near 100 Hatley Acres Road.



## MUNICIPAL NEWSLETTER MINI-SURVEY

1. Do you consult this printed municipal newsletter?
2. Should we continue to produce a printed version of the municipal newsletter or would an electronic version be enough?
3. Do you have any comments on this?



Please send your answers by email to [reception@cantondehatley.ca](mailto:reception@cantondehatley.ca) or by phone at 819 842-2977





## Fire Prevention is **YOUR RESPONSIBILITY!**

### 10 FIRE-PREVENTION TIPS



#### SMOKE DETECTORS

- Install a smoke detector on each floor, including the basement.
- Choose a photoelectric cell model, which triggers fewer unnecessary alarms.
- Change the detector according to the replacement date that the manufacturer indicates on the case.



#### EVACUATION PLAN IN CASE OF FIRE

- Locate two possible exits.
- Identify an assembly point located outside and inform all the occupants of the residence.
- Rehearse with all the occupants the steps to be followed during an evacuation in case of fire.



#### HOW TO EVACUATE YOUR RESIDENCE

- Close the doors behind you to prevent flames and smoke from spreading to other rooms or into other dwellings.
- Dial 911 once you are outside your residence.



#### SMOKERS' ITEMS

- Do not throw cigarette butts into flowerpots or on mulch.
- Place butts in a metal container.



#### SOURCES OF HEAT

- Move curtains or furniture at least 10 cm from radiators, electric baseboard heating units or any other heat source.



#### ELECTRICITY

- Have a master electrician carry out the electrical installation in your residence.
- Use electrical appliances approved in Canada and bearing the CSA and ULC marks.



#### CARBON MONOXIDE

- Install a carbon monoxide detector if your garage adjoins your residence or if you use non-electric heating or cooking units.
- Follow the manufacturer's instructions to install the carbon monoxide detector.



#### PREVENT COOKING FIRES

- Constantly monitor food that is cooking and use a timer.
- Never heat oil in any type of cauldron to fry foods. Use a thermostat-controlled deep fryer.



#### CHIMNEY SWEEPING

- Have an expert inspect and sweep your chimney once a year, before the heating season begins. The same applies to the outlet pipes of pellet fireplaces.



#### HOT ASHES

- Let hot ashes cool off outside in a metal container with a metal lid.
- Wait at least seven days before transferring them to a trash bin.

In collaboration with your fire safety service

[Quebec.ca/prevention-incendies](https://quebec.ca/prevention-incendies)



# TOPONYMIC HERITAGE OF THE TOWNSHIP OF HATLEY

## JACK CREEK IS NAMED FOR THE JACKSON FAMILY, ESTABLISHED AROUND 1890

There is a 6 km long stream named Jack which has its source both in an area between Beaupré and Bel-Horizon streets in Sherbrooke as well as in another area between Albert Mines road and the quarry on Bel-Horizon road in the Canton of Hatley. The stream runs along rue Bel-Horizon then Belvédère Sud street before crossing Belvédère Heights. At the corner of Belvédère Sud street and Haskell Hill road, Jack stream takes a southerly and southeasterly direction until it empties into the Massawippi River.

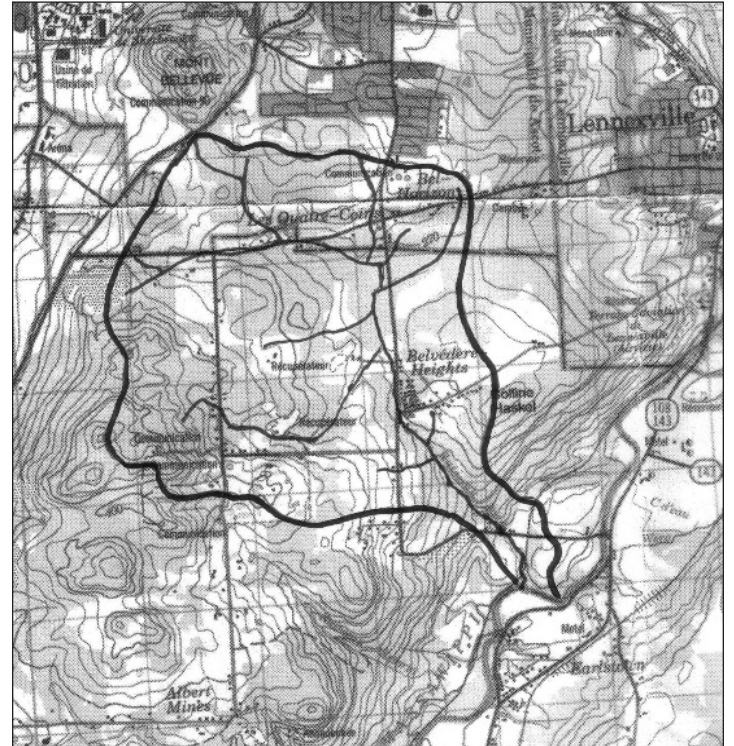
Until the 1970s, the stream's watershed was completely agricultural, with many wooded areas. Crops then gave way to fallow land. Except for the part of the hamlet of Belvédère Heights, which developed mainly from the 1980s, the watershed is mainly wooded. The watercourse crosses a 48-hectare wetland south of rue Bel-Horizon, on either side of rue Belvédère Sud. This wetland is partly crossed by the extension of the Jacques-O'Bready Highway.

It appears that the creek was first named after Smith and later Jackson or Jack, presumably from the time the farm passed into the hands of the Jackson family. This would have lasted until the early 1970s when the toponym was formalized on August 17, 1978, by the Commission de toponymie du Québec.

The name of the stream comes from the Jackson family, whose farm was in the area of the Belvédère-Heights hamlet (see map). Isaac and Ellen Jackson came from Ireland around 1831 to settle on a farm in Hemmingford. In 1856 their son John came to Dudswell to marry Margaret Mitchell and they settled there on a farm. They had six children, one of whom, John A. (1859-1924), married Jane Smith (1858-1939). They, at an unknown date, bought a farm from Jane's brother, Allen Thomas Smith (1889-1974), at Belvédère Heights in the Township of Ascot

This farm belonged to the Smith family since John Smith (1843-1924) settled there before 1863. Chemin Smith, which intersects rue Belvédère Sud in the Canton of Hatley, is named for John Smith. John A. Jackson was a miner and his son, Frederick (1892-1973) looked after the farm which he inherited on the death of his father. He continued to reside there until at least 1931.

Jean-Marie Dubois (Université de Sherbrooke) and Gérard Côté (Société d'histoire et du musée de Lennoxville and Ascot)



Jack's Creek watershed map.



Photo : Lennoxville, Volume 2. Lennoxville-Ascot Historical and Museum Society, Lennoxville, p. 110.