



Municipal Newsletter

# Le Babillard

Municipal Information Newsletter • Volume 10, number 04 • Winter 2022-2023

CANTON DE HATLEY

*Our best  
wishes for the  
Holidays!*

[cantondehatley.ca](http://cantondehatley.ca)

2	Message from the Mayor
3	Municipal Info
4	Snow removal
5	Highlights of Council Meetings
5	Environment



## MEMBERS OF THE MUNICIPAL COUNCIL



**COUNCILLOR 1**

**Patrick  
Clowery**



**COUNCILLOR 2**

**Jacques  
Lambert**



**COUNCILLOR 3**

**Jacques  
Bogenez**



**COUNCILLOR 4**

**Maryse  
Gaudreau**



**COUNCILLOR 5**

**Danielle  
Côté**



**COUNCILLOR 6**

**Sylvie  
Cassar**

**MUNICIPALITÉ DU CANTON DE HATLEY**  
4765 chemin de Capelton  
Canton-de-Hatley (Québec) J0B 2C0  
Tel.: 819 842-2977  
Fax: 819 842-1997  
Email: [info@cantondehatley.ca](mailto:info@cantondehatley.ca)

Graphic design and printing:  
**Les Publications Municipales Inc.**  
1 877-553-1955

## MESSAGE FROM THE MAYOR

Dear citizens,

### 2023 budget and taxes

The Municipality is confronted with inflation, like any organization. The Municipality will therefore adapt its budget to the economic context, but rest assured that Council is working with a view to maintaining the level of services without increasing our burden too much as taxpayers.

### Bilingual status

Since the adoption of Bill 96, the bilingual status of a municipality can be revoked if English is the mother tongue of less than 50% of its population. However, it may retain this status if Council adopts a resolution within 120 days of receiving notice from the Office de la langue française concerning its population.

Even if the Municipality has still not received a notice from the Office de la langue française, Council adopted a resolution last June stating that it is maintaining its bilingual status. This status allows the Municipality to express itself in a language other than French, as it does with this newsletter.

### Improved waste management

We can be proud of our progress in waste management. Once again, this year, we can see a drop in the tonnage of landfill materials (black bin) and an increase in composted materials (brown bin). That being said, there is still plenty of room for improvement; too much organic matter ends up in the landfill when it could find new life as compost. The same goes for recyclables!

Visiting Sherbrooke's ecocentres is still very popular with our citizens. In 2021, there had been a record 1,460 visits. The results for 2022 should be of the same order. This is good news, since the ecocentres contribute to reusing and recycling waste materials. Thanks to each of you for your efforts. You make a difference!

### Stay the course

The end of the year often brings us to take stock. As council members, we are proud of the work accomplished. The decisions we are called upon to make, whether in terms of zoning planning or public investments, are guided by a common axis. This axis is the protection of our exceptional living environment, the prudent management of our infrastructures and the maintenance of the quality of services.

With these words, I hope you enjoy winter and the upcoming holiday season.

**Vincent Fontaine, mayor**



## MUNICIPAL INFO

### HOLIDAY SCHEDULE

The municipal office will be closed as of **December 23<sup>rd</sup>, 2022 to January 2<sup>nd</sup>, 2023 included**. For any municipal emergency (example: an icy and dangerous road), please call the Sûreté du Québec at 310-4141. The SQ can reach all municipal services.

### AUTOMATED ALERT SYSTEM

The municipality's automated alert system makes it possible to reach its citizens by phone, text or e-mail for the transmission of important messages such as road closures or other messages of public interest.

You can add your contact details by sending an email to: [reception@cantondehatley.ca](mailto:reception@cantondehatley.ca)



### Stay informed

To stay informed of the latest news from the municipality, please subscribe to the newsletter from the home page of the [cantondehatley.ca](http://cantondehatley.ca) web site. You can also follow the municipality's Facebook page. [facebook.com/cantondehatley](https://facebook.com/cantondehatley)



**NORTH HATLEY OUTDOOR CHRISTMAS MARKET**  
December 9, 2022 from 3 p.m. to 8 p.m.  
December 10, 2022 from 10 a.m. to 3 p.m.  
Parc Rivière (entrance via Capelton Road)  
Watch the e-newsletter for details.

IN THE CANTON,  
**let's buy**  
**LOCAL!**

### HAVE YOU THOUGHT ABOUT BUYING LOCALLY FOR CHRISTMAS?

Consult our list of companies on the Canton's website at: [cantondehatley.ca/en/information/businesses/](http://cantondehatley.ca/en/information/businesses/)

There you will find the perfect gift that will be appreciated by your family and friends. Please feel free to go directly to the companies' websites for more information on their products and services.

Many businesses are preparing baskets and other original gift ideas for the Holiday Season to please everyone! Contact them or visit them to see for yourself. How about a painting, print, food basket or gift certificate?

***Happy treasure hunting!***

## Ensemble Vocal Massawippi

Lise Gardner  
Direction musicale

## Gloria in Excelsis Deo

Concert de Noël  
Oeuvres de Beethoven, Haendel, Haydn,  
Rutter, Gjeilo, Forrest, Jenkins, Whitacre

Ensemble Vocal Massawippi  
Christmas Concert - Gloria in Excelsis Deo

**Sunday, December 11, 2022, 3 p.m**

Saint-Patrice Church - 115 Rue Merry N, Magog  
[ensemblevocalmassawippi.com/billetterie/](http://ensemblevocalmassawippi.com/billetterie/)





# SNOW REMOVAL

## REMINDER

## THE RIGHT WAY TO PLACE BINS ❄️



Please place them inside your driveway, as illustrated, so as not to interfere with snow removal.



DRIVEWAY



ROAD SHOULDER



ROAD

## PLEASE KEEP YOUR SNOW ❄️



It is **FORBIDDEN** to push snow on public roads, across the street or in the ditches.

You are also responsible for the work of your snow remover.



Snow deposited on public roads is punishable by fine.



**Thank you for your cooperation!**

## SNOW STAKES

Snow stakes must be within the boundaries of private property, to allow adequate snow removal from the public road.

## MAIL BOXES

The municipality is not responsible for mailboxes broken by the snow removal truck if the installation does not meet standards. Please see the standards on the municipal web site:

[cantondehatley.ca/en/land/mailboxes/](http://cantondehatley.ca/en/land/mailboxes/)



## A SNOW CLEARING TOUR TAKES 3-4 HOURS

During a snowfall, snow removal can take around 3-4 hours to clear the entire municipality once with the snow plow trucks. Usually, snow removal teams start their runs around 3 a.m. to finish their first tour between 6 a.m. and 7 a.m. A second run takes place in the afternoon when it snows during the day, starting around 1:30 p.m. to 2 p.m. Thank you for your cooperation.



## RECREATION

### Cross-country ski trail

This winter, take advantage of an 8 km cross-country ski trail between the Capelton Mine and the Massawippi River dam on Vaughan Road. A large parking lot is available at the Capelton Mine (north side) and a smaller one at the end of Kingdom Road.

### Recreation surcharge refund

Any request for refund of the surcharge must be submitted in the same calendar year as the date of registration. Therefore, any refund request must reach the municipality **before December 31, 2022**. If the office is closed, the postmark will be used as proof of the date.

To request a refund by email:  
[admin@cantondehatley.ca](mailto:admin@cantondehatley.ca)

The municipality refunds 100% of the surtax paid when registering for recreational activities, for children 17 and under, up to 150 \$ per child per year.

All recreational, cultural and sports activities are admissible, except those already offered by the Canton de Hatley.



# HIGHLIGHTS OF MUNICIPAL COUNCIL MEETINGS

## Winter 2022-2023

### COUNCIL MEETING OF OCTOBER 4<sup>TH</sup>, 2022

#### Cross-country ski trail groomer

The Municipality acquires a groomer to maintain the cross-country ski trail. The groomer is manufactured by Tillertech, a company in the Eastern Townships.

#### Agricultural plastics pick-up

The Municipality accepts the service offer of the MRC de Coaticook for the collection of agricultural plastics in the Canton of Hatley in 2023.

### BOARD MEETING OF NOVEMBER 1, 2022

#### Régie de l'Est

The Municipality is a member of the Régie intermunicipale de prévention et de protection incendie Memphrémagog Est (Régie de l'Est). It

therefore adopted the Régie de l'Est's budget of \$1,657,835 for 2023. The estimated contribution of the Canton de Hatley is \$215,446.

#### Régie de Coaticook

The Municipality is a member of the Régie intermunicipale de gestion des déchets solides de la région de Coaticook (Régie de Coaticook). It therefore adopted the Régie de Coaticook's budget of \$3,212,875 for 2023. The contribution of the Canton de Hatley will be based on the tonnage of residual materials sent to landfill and composting.

#### Eau secours

The Municipality joins the MRC of Vaudreuil-Soulanges and Saint-Élie-de-Caxton, in asking for sustainable and transparent management of water. It asks that the legal framework be amended so as to confer a public nature on the data relating to all water withdrawals declared to the ministère de l'Environnement et de la Lutte contre les changements climatiques.

## ENVIRONMENT

### A NEW ENVIRONMENTAL INSPECTOR

The Municipality has created a new position of environmental and urban planning inspector. Vincent Maurice-Kiepura was appointed to this position on September 6, 2022. He will work closely with the building and environment inspector, Mr. Éric Gravel. He will also be able to answer your questions concerning your projects or permit applications.

#### To reach him:

Vincent Maurice-Kiepura,  
environmental and urban planning inspector  
[environment@cantondehatley.ca](mailto:environment@cantondehatley.ca)  
819-842-2977 ext. 125

### WINTER PICK-UP CALENDAR

Please remember that the pick-up schedule changes during the winter. From November to March, the brown bin collection is **twice a month** and the black bin collection (ultimate waste) is reduced to **once a month**. The bins must be taken out after 7 p.m. the night before or **before 6 a.m.** on the day of pick-up. The 2023 calendar will be mailed to you shortly and is also available on the web site. Consult the Waste management section for more information and tips for using your brown bin in winter.

### ONLY ONE BLACK BIN PER UNIT

In the Canton of Hatley, each residence is limited, in the basic service, to one black bin. Additional black bins will be billed at the current rate.



## THE NEW HERRING BRIDGE: IN MEMORY OF A FAMILY SETTLED ABOUT 1910

This 225 m long bridge spanning the Massawippi River and the bike path linking Lennoxville to North Hatley was built in 2011 by the Ministère des Transports du Québec on route 143, as part of the extension of the Jacques-O'Bready highway. (410). It is located in Waterville and at the northeast end of the Canton de Hatley, but its northern approach is in the city of Sherbrooke.

The bridge is about 200 meters south of the intersection of Route 143 with Haskell Hill road which leads to the Potager d'Emylou and about 600 meters north of Marché Ferme Beaulieu, located at the crossroads of Routes 143 and 147.

The Herring Bridge replaces the bridge which had been built in 1938 a little downstream, and which had borne the name Comstock (1938-1983), Hearing (1983-2010) and finally the correct spelling, Herring (2010-2012).

The 1938 bridge (Comstock/Hearing/Herring) was demolished during the winter of 2011-2012. The municipal council of Sherbrooke, at its meeting of September 6, 2011, suggested to the Commission de toponymie du Québec to keep the name Herring for the new bridge which had just been built.



The Morrisette Bridge on the stone abutments of the old covered bridge and the Herring Bridge. The Morrisette Bridge is used for the region's snowmobile network.

It should also be mentioned that the 1938 Herring Bridge replaced the covered bridge of the same name (Comstock) which had been built in 1854 on the site of the present Morrisette Bridge, a small bridge visible from the cycle path when passing under Herring Bridge. It is interesting to note that the bike path bridge was built on the very stone abutments of the covered bridge. It was also here that a first bridge had been built, around 1812. It was then then called the Mallory Bridge. It was part of the Queen's Highway between Sherbrooke and the USA.

The new Herring Bridge, as with the old one, was built on the former Fairview Dairy Farms. These belonged to the Mallory family from 1804 to 1921 and to the Herring family until 2010 when it was expropriated by the

Ministère des Transports. It is Aaron Mallory Jr. (1760-1846) who had had settled here, having come with his wife Olive Terrill (1759-1823) from Woodbury, Connecticut. But it was his great grandson, James Garland Mallory (1849-1938), who started the sale of milk under the name of Fairview Farms. He is also the one who, in 1887, rebuilt the family brick home in the neo-gothic fashion, at 1 Queen Street. The home burned down in April 2001 as did the farm buildings, in 2007. Florence Helena (1887-1974), James Garland's daughter, married Charles Thomas Herring in 1915.



Photo of Florence Mallory: courtesy of Bruce Herring, Sherbrooke

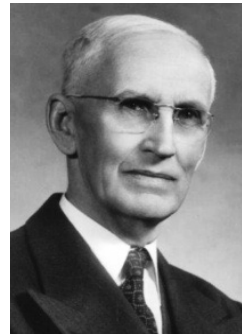


Photo of Charles Herring: courtesy of Bruce Herring, Sherbrooke

Charles Thomas Herring was born in Bury Township, May 28 1886. He was the second of the five children of Harriet Harrison (1863-1957) and of Isaac Charles Herring (1852-1923). Around 1910, they left Bury Township, where Isaac's parents had come as immigrants in the 1840s, and settled in Huntingville. At the time, Charles Thomas started to work for the Mallory family. In 1915, James Garland Mallory gave his farm to Charles Thomas as a wedding present when he married his daughter. The couple improved the dairy farm and renamed it Fairview Dairy Farms in 1921. This continued on until 1974, when the farming ceased, giving way to the competition. In 1924, Florence found other income by converting the old house into a tourist home, calling it the Fairview Inn, which was closed in 1974. Upon the death of Charles Thomas in 1963, the family business was taken over by his son, Charles Gordon (1917-2012). He had married Grace Brown Paterson (1919-2006), in Scotland on June 13, 1944, when he was with the Royal Canadian Air Force, Squadron No. 427. His son Brian ran the farm until it was expropriated in 2010; upon which he bought another one in the Township of Hatley.

Jean-Marie Dubois (Université de Sherbrooke) and Gérard Coté (Société d'histoire et du musée de Lennoxville and Ascot)



The Herring Bridge, seen from the bike path. Geographical location: 45°20'58.4"N 71°51'50.6"W (45.349561, -71.864061)