



Municipal Newsletter

Le Babillard

Municipal Information Newsletter • Volume 11, number 02 • Summer 2023

CANTON DE HATLEY



Cinema under the stars
Free outdoor screening

Page 3

cantondehatley.ca

Photo credit: Marie Lemonnier

2	Word from the Mayor
3	Financial Statement
5	Echoes from the Municipal Council
6	Environment
10	Pet census

MEMBERS OF THE MUNICIPAL COUNCIL



COUNCILLOR 1

**Patrick
Clowery**



COUNCILLOR 2

**Jacques
Lambert**



COUNCILLOR 3

**Jacques
Bogenez**



COUNCILLOR 4

**Maryse
Gaudreau**



COUNCILLOR 5

**Danielle
Côté**



COUNCILLOR 6

**Sylvie
Cassar**

MUNICIPALITÉ DU CANTON DE HATLEY

4765 chemin de Capelton
Canton-de-Hatley (Québec) J0B 2C0
Tel.: 819 842-2977
Email: info@cantondehatley.ca

Opening hours: Monday to Friday
8 a.m. to 12 p.m. and 1 to 4 p.m.

Graphic design and printing:
Les Publications Municipales Inc.
1 877-553-1955

WORD FROM THE MAYOR

Dear citizens,

Mother Nature

Without getting into the hot topic of climate change, we have lately been affected by the vagaries of the weather. Our region was spared from major forest fires, but we still saw the effects of drought on the vegetation. We were banned from making open fires for several weeks, for reasons that were obvious. Daily, we were able to follow the evolution of the situation on the Société de protection des forêts contre le feu website, sopfeu.qc.ca. We all have an interest in getting to know this information source better, especially before lighting an open fire. An open fire permit is also required (no cost), please contact the Régie Incendie Memphrémagog Est at 819 838-5877 ext. 209.

Be careful on waterways

Many of us take advantage of the beautiful season to venture out on lakes and rivers. Despite long-standing awareness campaigns, too many people still take unnecessary risks. About 70% of drownings in Quebec occur, according to the Société de sauvetage, in natural bodies of water (rivers and lakes). The biggest risk factor is not wearing a personal flotation device (PFD) or life jacket. Other factors include capsizing, boating alone, inability to swim and alcohol consumption. Whether you are on a fishing trip or simply cooling off in a river, I hope you put the odds on your side!

Roadworks

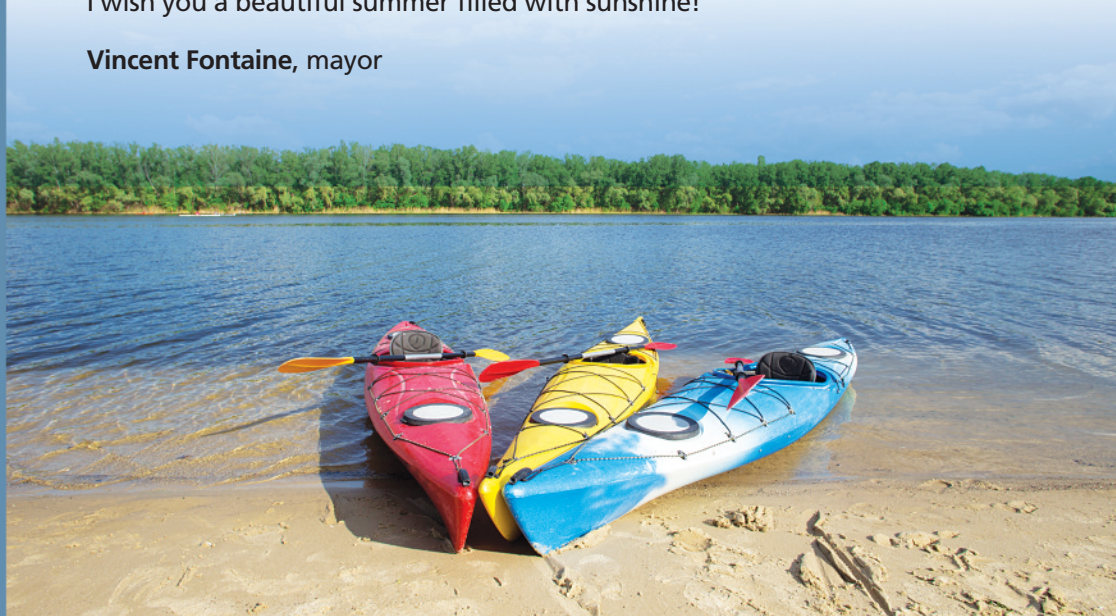
The Municipality continues to invest in the road network. A significant portion of our municipal resources go towards the maintenance of our more than 70 kms of roads. Spring often reveals weaknesses in the road structure and our team tackles these during the summer. If you have concerns about the roads, we invite you to use the request form available on the site cantondehatley.ca/en/information/request-or-complaint/. This allows for follow-ups by the administration.

Hall rentals

The Community Hall, often used for recreational activities, is also available for rental for private events for citizens. The Council Hall, currently under renovation, will also be available in the coming months and will include a new kitchen. We hope this will diversify the activities and events possible for citizens.

I wish you a beautiful summer filled with sunshine!

Vincent Fontaine, mayor



FINANCIAL STATEMENT

FINANCIAL STATEMENT 2022

Highlights of the financial report
and the report of the external
auditor

Dear citizens,

Pursuant to article 176.2.2 of the
Municipal Code, I present to you
the 2022 financial report.



Consolidated financial report

The consolidated financial report includes the following partnerships: Régie du Parc régional Massawippi (20%), Régie incendie Memphrémagog Est (13,60%), Régie des eaux Massawippi (24,5%) and the Régie intermunicipale de gestion des déchets solides de la région de Coaticook (2,75%). However, for the purpose of aiding understanding, we will present the highlights of the municipal portion only. The consolidated report is nevertheless available on the cantondehatley.ca website. The 2022 report ends with a final surplus of \$498,536 for fiscal year 2022.

Municipal financial report

The audit of the financial statements for the year 2022 was carried out by the firm Raymond Chabot Grant Thornton. For 2022, revenues were \$4,559,338 while expenses and appropriations were \$4,330,571, leaving an operating surplus of \$228,767. Adding to this amount the various appropriations and financing operations, we arrive at a surplus of \$498,536.

Capital acquisitions

The main 2022 capital acquisitions include:

- Development of a pedestrian path, Hatley Center road \$54,386
- Equipment for maintenance of trails and cross-country ski trail \$63,695
- Vehicle #06 transmission rebuilt \$36,759

The year 2022, in the post-pandemic context, was an exceptional year in terms of real estate, bringing the municipality \$233,000 more in transfer duties and taxes due to new constructions compared to the anticipated budget. We also had job vacancies which generated savings in administrative costs while waiting to fill these positions as well as reduced recreational activities due to the renovations of our community halls. The municipality rendered more services, which brought us a surplus of \$50,000 for the 2022 fiscal year and we received additional amounts in transfer in the amount of \$46,207. Finally, other sums attributable to reserved funds, in particular parks and playgrounds for the sum of \$77,174.

In conclusion, the financial health of the municipality is doing very well, thanks to its constant concern for efficiency and rigorous management of its resources.

Rest assured that Council will continue to plan effectively to provide quality services, while respecting the ability of citizens to pay.

Thank you for your continued support.

Vincent Fontaine, mayor

COMMUNITY

CINEMA

under the stars



JULY 14 ★ **Black Panther :
Longue Vie au Wakanda** (in french)

AUGUST 4 ★ **Super Mario Bros Le film** (in french)

**Free outdoor screening, starting at dusk,
at Town Hall • 4765 Capelton Road**
In case of rain, the screening will take place in the Council meeting hall.

Bring a blanket, bug spray and lawn chairs.
Bring your snacks and drinks.

Everyone is welcome!





SUMMER OFFICE OPENING HOURS

From the Fête Nationale (June 24) to Labor Day (September 4), the municipal office will close on Friday at 12:30 p.m. Monday to Thursday the office remains open from 8 a.m. to 12 p.m. and from 1 p.m. to 4 p.m.



MASSAWIPPI BEACH (AYER'S CLIFF)

Due to the personnel shortage, swimming is prohibited for the time being. The lifeguard position is still open and interested parties can send their CVs to dg@ayerscliff.ca. In the meantime, there is still access to the beach (without swimming) and rest areas.

NEW - Rental center

Services offered: pontoon and fishing boat rentals, kayak, paddleboard, canoe and pedal-boat rentals, ice and worm sales, snack, beverage, sandwich and other sales, sale and rental of flotation jackets and nautical products. For reservations or information: 819 679-2880 / locationdesquatre-lacs.com



Opening hours: June 23 to September 4, 8 a.m. to 8 p.m.; September 4 to October 9, 10 a.m. to 6 p.m.

Residents benefit from a 15% discount on pontoon rentals and a 10% discount on kayak rentals and other nautical activities (upon presentation of ID).

PLEASANT VIEW BEACH (NORTH HATLEY)

Free for residents of Canton de Hatley. Registration required at North Hatley Town Hall. Open from June 18 to October 14, depending on the temperature.

Free tennis for residents of Canton de Hatley, check-in at the beach. Tennis lessons, swimming lessons, golf lessons and sailing camp also offered, information on the northhatley.org website and registration at North Hatley Town Hall.



MARCHÉ CHAMPÊTRE
- 1976 -

NORTH HATLEY COUNTRY MARKET

Every Saturday from 10 a.m. to 12 p.m. From June 17 to October 14, 2023

At River Park (accessible by Capelton road in the village of North Hatley)

Come discover and support nearly thirty local merchants and producers in a festive atmosphere!

PHOTO SEARCH FOR THE 2024 CALENDAR

We are looking for the most beautiful photos of the Canton for the production of our annual calendar. The theme is open and can include landscapes, nature, wildlife, leisure activities, the agricultural world, etc. Do not hesitate to send us your high-quality photos throughout the year at reception@cantondehatley.ca. Your participation is greatly appreciated!



THE TOWN HALL BOOK SHARING BOX NEEDS YOUR HELP!

The municipality is appealing to the generosity of citizens in order to replenish its children's book sharing box. We regularly receive novels and books for adults, but there is a lack of books to entertain children and teenagers. You can drop off your books directly in the book sharing box at any time or at the reception desk at Town Hall during opening hours. Thank you for your collaboration and happy reading!

NO PARKING IN DEAD ENDS

The Municipality is amending the by-law to prohibit parking in the last 50 meters of a dead end or in a turnaround. The goal is to allow trucks to always use the turnarounds, whether for snow removal or other uses.

It's all of
Quebec that's
accelerating



HIGH SPEED INTERNET ACCESS IN QUEBEC

Don't have access to high-speed internet yet? We invite you to follow the following steps:

- 1- **Consult the interactive map:** quebec.ca/gouvernement/politiques-orientations/internet-haute-vitesse-etat-situation. The interactive map gives you the status of the situation for your address
- 2- **Contact the government:** If it turns out that the information provided on the civic address entered is incorrect, or if it does not appear in the search results, please write to : carte.interactive@mce.gouv.qc.ca
- 3- **Contact the Municipality:** you have done steps 1 and 2 and did not get an answer? Please contact the Municipality via the page cantondehatley.ca/en/information/request-or-complaint/

Summer 2023

You will find here some highlights that may be of more general interest. The complete text of the minutes of council meetings is available on the website: cantondehatley.ca/en/administration/meeting-proceedings/

APRIL 4TH COUNCIL MEETING

Main residence tourism lodging

The Municipality prohibits the use of main residence tourism lodging in several areas.

PRIMADA - memorandum of understanding

Council approves an agreement between with the Minister of Municipal Affairs, for financial assistance from the Programme d'infrastructures municipalit   amie des a  n  s, for the development of a rest area with gazebo.

MAY 2ND COUNCIL MEETING

Recyclables collection modernization

The Municipality of the Canton of Hatley expressed its interest in concluding an intermunicipal agreement to delegate to the MRC the responsibility of negotiating with   co Entreprises Qu  bec an agreement concerning the collection and transport of recyclable materials.

Lake Massawippi Conservation Club

The Municipality gave \$850 to the Lake Massawippi Conservation Club to support its activities in 2023.

COGESAF membership 2023-2024

The Municipality joins the Conseil de gouvernance de l'eau des bassins versants de la rivi  re Saint-Fran  ois (COGESAF) for 2023-2024.

Arts-cultures Massawippi – cultural activity

Council authorizes a contribution of \$3,500 to Arts-cultures Massawippi for an initiation to culture event, to inaugurate the future multiuse gazebo.

Journ  e nationale des Patriotes – flag hoisting

The Municipality hoists the Patriots' flag as part of Journ  e nationale des Patriotes, from May 19 to 23, 2023.

Motion of thanks to Pierre Levac

Council would like to warmly thank Pierre Levac for his generous participation in the video produced by the Bureau Estrien de l'audiovisuel et du Multimedia (BEAM). His participation, to the praise of the Canton de Hatley, reflected his attachment and dedication to the Municipality, for which he acted as mayor from 1993 to 2013.

JUNE 6TH COUNCIL MEETING

Parking regulations

The Municipality amends the by-law to prohibit parking in the last 50 meters of a cul-de-sac or in a turning area.

Zoning by-law 2023-39

The Municipality is amending the zoning by-law so that any fill or excavation activity of more than 100 m   is subject to obtaining a certificate of authorization.

Support for the F  te Nationale

Council authorizes financial support of \$2,500 for the 2023 F  te Nationale in North Hatley, a volunteer initiative and an event open to all citizens. The same support was provided by North Hatley.

North Hatley Leisure Agreement – 2022 billing

The Municipality pays \$32,403 to the Village of North Hatley under the recreation agreement. The agreement concerns the beach and the skating rink, among other things.

Summer office opening hours

From the F  te Nationale (June 24) to Labor Day (September 4), the municipal office will close on Friday at 12:30 p.m. Monday to Thursday the office remains open from 8 a.m. to 12 p.m. and from 1 p.m. to 4 p.m.

BACKFILL & EXCAVATION - IMPORTANT NEWS

Do you want to fill in your land or do a major excavation?

Note that the Municipality has adopted a draft by-law to regulate backfilling and excavation activities throughout its territory. For any fill or excavation of more than 100 m² (10mx10m), a certificate of authorization will now be required.

TICKS MAY BE NEAR YOUR HOME! BEWARE OF BITES!

The arrival of good weather marks the start of tick season. This year again, ticks are present in most of the territory of Estrie. In 2022, 296 cases of Lyme disease and 11 cases of anaplasmosis were recorded. If not treated in time, tick-borne diseases can have serious consequences on a person's health. So, caution is in order for the whole population..

Tips for preventing tick-borne diseases

From April to November, be sure to follow our prevention advice during your outdoor outings, mainly in the forest, in the woods, in the tall grass, or during activities on your land (cutting wood, gardening, etc.):

- Use mosquito repellent containing DEET or icaridin;
- Wear long clothes that fully cover the body;
- Favor walking on open paths and avoid brushing against vegetation;
- When you return from the activity, take a shower,
- Examine your body and remove any ticks found as soon as possible.

Ticks can also be found on your residential property! We therefore advise you to:

- Clear areas that are often frequented near the house;
- Remove dead leaf coverings, brush and weeds from the edge of the lawn, around the wood supply and the shed;
- Mow the lawn regularly;
- Move children's games and sandboxes away from the edge of woodlots and place them on a structure made of wood chips or mulch;
- Consider installing tiles, gravel or container planting on areas that are closest to the house or that are frequently visited;
- Clean and seal stone or cement walls and small openings in the exterior covering of your house;
- Move firewood supplies and bird feeders away from the house.

Note that other prevention tips and a wealth of information are available at santeestrie.qc.ca/tiques and quebec.ca/lyme.

What to do in case of a bite?

If a tick has bitten you, it is very important to remove it as quickly as possible using fine tweezers. Indeed, the risk of disease transmission by ticks increases with the duration of the tick's attachment. Don't forget to examine your children and your pets! These are also susceptible to being bitten by ticks.

In the event of a tick bite, the Direction de la santé publique recommends calling Info-Santé at 8-1-1 to confirm whether you are eligible for medication to prevent Lyme disease (also called prophylaxis). This drug is effective in preventing Lyme disease, but does not prevent anaplasmosis. You can obtain this preventive treatment from your pharmacist or doctor.

What are anaplasmosis and Lyme disease?

Lyme disease is the most well-known tick-borne disease in Quebec. Its most common symptoms are redness on the skin at the site of the bite, fever, fatigue, headache, and body aches. These symptoms usually appear within a month of the tick bite. It is important to consult a doctor if symptoms appear, because this infection is treated with antibiotics!

Anaplasmosis is a more recent disease in Estrie. It results in fever, chills, headache, body aches and gastrointestinal discomfort. These symptoms usually appear 1 to 2 weeks after the tick bite. In most people, the symptoms are moderate or mild and can be treated with antibiotics. However, the elderly and people with weakened immune systems may be more seriously affected and may require hospitalization.

Again, this summer, be careful when going out in the forest, camping, near water... Anywhere where the grass is high! We prefer you healthy!



It goes to the ecocentre!

**DID
YOU
KNOW**



Objects and materials that are not large ultimate waste are accepted free of charge at the Sherbrooke ecocentres.

Free access for Canton de Hatley residents with proof of residence.

MATERIALS ACCEPTED AT SHERBROOKE ECOCENTRES THAT ARE NOT LARGE ULTIMATE WASTE:

Furnishing: Mattresses, wooden furniture

Sporting goods: Bicycles, tricycle, children's bike, scooter, golf clubs, skis

Appliances: Refrigerator, freezer, oven, microwave oven, air conditioner, washer, dishwasher, dryer, stove, fountain, cooler and water dispenser

Small appliances: Barbecue, kettle, pressure cooker, food processor, razor, hair dryer, blender, vacuum cleaner, coffee maker, iron, ironing board, toaster, bathroom scale

Electronic devices: Computer, TV, monitor, tablet, radio, audio player, electronic toy, UPS power system, charger

Transformed wood: Painted, treated, reusable or from pallets, furniture

Natural wood: Branches, logs, pruning residues and trunks

Miscellaneous: Coolers, books

Construction, renovation or demolition materials: Windows, mirror, planks, asphalt shingles, gypsum, chipboard or aluminum siding, insulation board, wood fiber board, wood chip board, door, patio door, wood treated, plywood, ceramic and tile, wooden pallet

Granular materials: Asphalt, stone, brick, concrete, rock, sand and uncontaminated earth

Recyclable materials accepted in the blue bin: Paper, cardboard, glass, plastic, metal containers

Textile materials: Clothing, rags, sheets, towels, eiderdowns, quilts, fabric curtains, fabrics, fabric tablecloths

Metal objects: Steel and cast iron bathtub, metal shelf, filing cabinet, metal chair, water heater, steel sink, straps, iron, aluminum, empty paint containers, air exchanger

Gardening and soil maintenance tools: Lawn mower, leaf blower, snow blower, chainsaw, small engine

Electrical tools and accessories for construction: Drill, saw, table saw, generator, sander, pump, ladder and stepladder, grinder, etc.

Tires: Car tires with or without rims, light truck tires, bicycle tires without rims

Garden or raking waste: Dead leaves, plants, peat, grass and small branches

Household hazardous waste (HHW): Aerosol, light bulbs, paint stripper, paint, oil, solvent, tar, pesticides, batteries, propane, vehicle batteries, etc.

Styrofoam: Insulation, packaging or food



**Large ultimate
waste pick-up
August 24, 2023**

ITEMS:

- ▶ Sofas and armchairs
- ▶ Storm drains
- ▶ Fiberglass and acrylic (showers, canoes, etc.)
- ▶ Child car seats
- ▶ Carpets, linoleum and underlay
- ▶ Tarpaulin
- ▶ Pool liner
- ▶ ABS pipe
- ▶ Vinyl

In length of 4 feet and less

**WHAT TO DO
WITH METAL
OBJECTS?**



**Metal pick-up
from August 17 to 23**

Please put the metal objects by the side of the road from August 17.

Examples: Steel and cast iron bathtub, metal shelf, file cabinet, metal chair, water heater, steel sink, refrigerator, stove, fence, BBQ, etc.



Need help figuring out which materials goes in which bin? ▶ [abcdesbacs.com](https://www.abcdesbacs.com)



Outdoor fire permit

The municipalities members of the Memphrémagog Est fire prevention and protection board, including the Canton of Hatley, have chosen to centralize and standardize the management of outdoor fires.



Outdoor fireplace with screen

 **AUTHORIZED**

AT ALL TIMES WITHOUT A LICENSE

Outdoor fires contained in an outdoor fireplace fitted with a screen cover and resting on a stone base is authorized at all times. It is the responsibility of the person lighting the fire that the smoke does not bother the neighbors.



Open fire

 **AUTHORIZED**

WITH PERMIT

LOW OR MODERATE INDEX

 **PROHIBITED**

HIGH, VERY HIGH OR EXTREME INDEX

HAVE YOU HEARD OF THE FIRE HAZARD INDEX?

Every day and for each region, starting in the spring, the Society for the Protection of Forests Against Fire (SOPFEU) issues a fire danger index. We invite you to consult the sopfeu.qc.ca website before lighting an open fire.



TO OBTAIN AN OPEN AIR FIRE PERMIT (NO COST)

By phone

Régie incendie Memphrémagog Est
819 838-5877 ext. 209

By internet form

Open air fire form:
regieincendieest.ca/feux-agrave-ciel-ouverts



Questions?

Régie incendie Memphrémagog Est
2100, route 143, Hatley QC J0B 4B0
819 838-5877 ext. 209
prevention@regieincendieest.com
regieincendieest.ca

THE MASSAWIPPI DAM: A COMPLEX MANAGEMENT

PARTNERS IN MANAGEMENT

The Municipality regularly receives calls from citizens who are concerned about the management of the dam and especially its effect on the level of Lake Massawippi. If the handling of the dam gate is done locally, its management is done in collaboration with the Centre d'expertise hydrique du Québec of the ministère de l'Environnement. The ministère de la Faune is also a partner in the management of the dam, particularly in the protection of fish habitats.

The level sought for the lake as well as the flow rates required for the river are constant considerations for the partners.

AN IMPERFECT TOOL

The Massawippi River dam is the tool to regulate, to a certain degree, the lake level, and the flow of the Massawippi River. The dam is a significant tool in this management, but with important limits.

During a heavy inrush of water, the dam is just a spillway – the water goes over it. For those who are less familiar with it, this dam does not make up half of the river – the rest is made up of the retaining structure, the level of which is fixed.

During a period of drought, the dam can certainly slow down the flow of water towards the river for the benefit of the lake, but it must at the same time maintain

sufficient water flow to reduce the impacts on the river's natural aquatic habitats. This minimum flow towards the river is usually established by the ministère de la Faune.

UNSTABLE WEATHER

Weather instability makes management of the Massawippi River dam more complex. It also reduces its effectiveness in managing the lake level and the river water flow. To act upstream and see what is coming, stakeholders constantly consult weather forecasts, but as you know, these tools are imperfect. The dam allows slow and gradual adjustments, it cannot respond effectively to a rapid rise in water caused by a storm. These water bursts are becoming more frequent, according to experts.

RESOURCE DISTRIBUTION

A prolonged drought gives us more time to react than a rainstorm. However, it is necessary at the same time to maintain water in the lake without drying up the river. It is then a question of distributing, considering sometimes contradictory interests, a temporarily insufficient resource (water). If the drought is significant and of long duration, the level of the lake will inevitably be too low, and the flow of the river will necessarily be too weak. Unfortunately, this scenario is becoming more and more realistic for the coming years. Also, according to experts, periods of intense heat and drought would also become more frequent in the future.



PET CENSUS



The Municipality of Canton de Hatley has mandated the Société protectrice des animaux (SPA) de l'Estrie to provide a pet protection and

control service, as well as to register and license dogs and cats.

A census will be conducted at the end of June and beginning of July 2023. Duly identified SPA de l'Estrie enumerators will come to your door to register your pets and give you an identification tag for each one. Wearing this tag is very important, as it ensures a rapid return home in the event of your pet being lost or running away.

Obligations and fees

Registration of cats and dogs is mandatory under the municipal by-law. In addition, since March 3, 2020, registration of all dogs is mandatory in Quebec under the Act to promote the protection of persons by establishing a framework with regard to dogs.

The license is valid from January 1 to December 31 and is renewable annually.

2023 fees	
Spayed or neutered dog:	\$45,00 *
Unspayed dog:	\$55,00
Spayed or neutered cat:	\$45,00 *
Unspayed cat:	\$45,00

** Proof required*

By mandating the SPA de l'Estrie and adopting this by-law, your municipal council is demonstrating that it cares about the well-being of your pets.



ARTS-CULTURES MASSAWIPPI

3 municipalities join forces with ARTS-CULTURES MASSAWIPPI to offer more than 15 artistic and cultural projects!

The Pub La Cie Vilandré was packed for the double launch of Arts-Cultures Massawippi's projects for the year, beginning with its 2 l'Art en Jeu visual arts exhibitions and announcing a panoply of good news!

Several announcements were made in the presence of Hatley Mayor Hélène Daneau, Canton de Hatley Mayor Vincent

Fontaine, North Hatley councillor Michel Desrosiers, Orford MNA Laura Pagé and Marianne Mondon of Conseil Culture Estrie, as well as numerous artists and citizens.

The 3 municipalities present gave their financial support to ACM for a total of \$16,500, making it possible to offer more than 15 artistic and cultural projects from June to December, for all ages and tastes.

For more information on current and upcoming activities, visit artsculturesmassawippi.org





NOTICE TO OWNERS OF FARMED BIRDS

Highly Pathogenic Avian Influenza Virus H5N1 in Québec

HIGHLY PATHOGENIC AVIAN INFLUENZA H5N1 HAS BEEN IDENTIFIED IN WILD AND FARMED BIRDS IN QUÉBEC.

1 MONITOR YOUR BIRDS FOR THE FOLLOWING CLINICAL SIGNS:

- Lack of energy and appetite
- Decreased egg production or soft shelled or shell less eggs
- Swollen head, eyelids, comb, wattles and shanks
- Cough, sneezing and neurological signs
- Diarrhea
- Lack of coordination
- Sudden death

In the event of unusual mortality or other signs of illness, see a veterinarian. If you are unable to find a veterinarian, call the Canadian Food Inspection Agency (CFIA)'s sick bird reporting line at 450 768 6763 or the Ministère de l'Agriculture, des Pêcheries et de l'Alimentation du Québec's (MAPAQ's) reporting line at 1 844 ANIMAUX.

2 AVOID CONTACT BETWEEN YOUR BIRDS AND WILD BIRDS.

Important information about preventing contact is available, visit Quebec.ca.

3 COMPLY WITH REGULATION.

Abide by the [Regulation respecting the sanitary conditions applicable to places where birds are kept in captivity](#).

4 AVOID CONTACT BETWEEN SMALL FLOCKS AND COMMERCIAL FLOCKS.

5 STRICTLY FOLLOW PREVENTION AND BIOSECURITY MEASURES FOR YOUR FLOCKS.

For more information, visit the [Équipe québécoise de contrôle des maladies avicoles](#) website (in French only).

To prevent the spread of avian influenza, **PRIMARY CONTROL ZONES (PCZS)** have been established around flocks that have tested positive for the disease.

In these zones, the movement of birds, their products and by products, as well as things exposed to birds, is restricted. Some types of movement are prohibited, while others require a permit.

- Check whether you live in a PCZ by visiting the [Highly pathogenic avian influenza zones](#) page on the Canadian Food Inspection Agency (CFIA) website.
- Use the [interactive tool on the CFIA's website](#) for information on the required permits along with conditions for the transportation of birds and by products in PCZs.
- For more information and assistance with permits and movement control permissions in PCZs, small-flock and farmed bird owners can email the MAPAQ at permisZCPdeplacement@mapaq.gouv.qc.ca.

FOR MORE INFORMATION ABOUT AVIAN INFLUENZA, VISIT QUEBEC.CA/AVIAN-INFLUENZA.

22-0069



GRASS ISLAND CREEK AND ITS GOLD

Grass Island Creek drains the entire southeast of the Rock Forest sector (Sherbrooke) and its main course, nearly 10 km long, has its source in the northwest part of the Canton de Hatley.

The name of the stream comes from an old marshy islet which was located at its mouth in the Magog River and which was flooded during the impoundment of the Rock Forest dam in 1911. The name already appears on a cadastral map of 1864 of the township of Ascot. However, the name of this stream is associated with an important mining event in the region: a gold rush. Indeed, in 1823, long before the Klondike in the Yukon, gold nuggets were discovered in the Beauce region, which had the first gold rush in 1846 and the Eastern Townships followed in the 1860s.

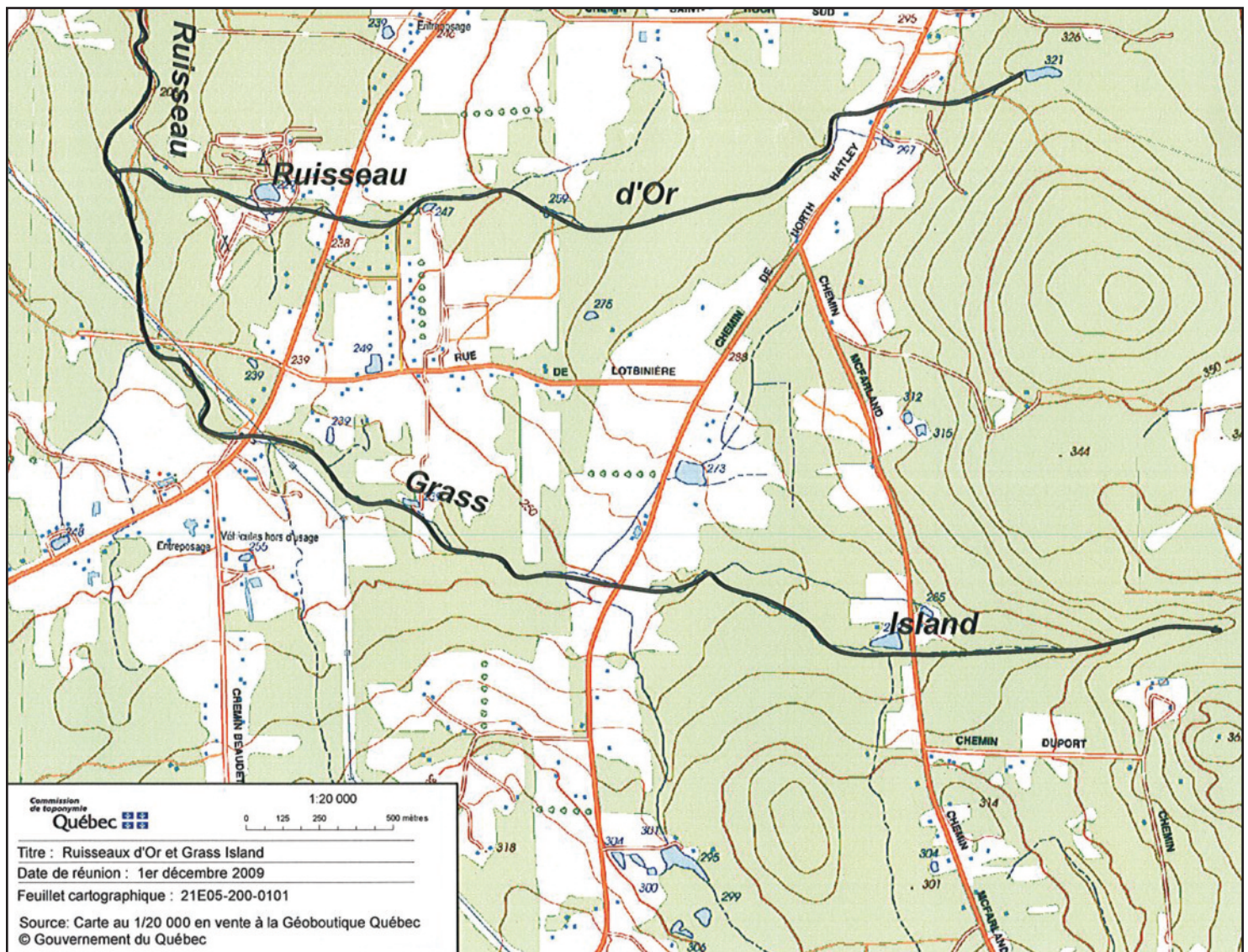
In the Sherbrooke region, the only real exploitation was done at Grass Island Creek. It was in 1863 that American General H. P. Adams set up the Golconda Mining Company to mine the gold placers west of Chemin de Sainte-

Catherine and south of Rue de Lotbinière. In the summer of 1865, Golconda mine employed 40 workers. In three weeks, they found gold worth between \$1,000 and \$2,000. In 1866, La Golconda operated a motorized crusher there to crush the stone to extract the gold. A well is even dug to a depth of nearly 10 m in one of the quartz veins. However, the company ceased operations in September 1866.

Around 1880, the site was again operated by Messrs. Stewart and A. Bowen. Abandoned again, the site was taken over in 1898 by Colonel Charles King of Sherbrooke. In 1905 and 1906, C. E. Kennedy of Beebe Plain and geologist Joseph Obalski extracted some gold there, either from quartz or by panning the sand.

In 1935, geologist Harold William McGerrigle made a serious inventory of the site and found gold of varying quality. Eventually, over the next several decades, several prospectors continued to pan the sand from Grass Island Creek, with mixed results.

Jean-Marie Dubois (University of Sherbrooke) and Gérard Côté (Lennoxville-Ascot Historical and Museum Society)



Grass stream is located in Sherbrooke, but some roads in the Canton of Hatley are part of its watershed, such as Montée Lapointe and Montclair Road.